

GOLFChicago

Chicago's Premier Multimedia Golf Source & Authority

May 2013, Vol. 17 No. 3

Champions at North Shore CC

Dad's Day Gift Guide

Destination: Geneva National

Dave Pelz: Short Game Advisor

**Building a Better Swing
with Dr. Suttie**

GOLFChicagoMagazine.com

PLAY A FEW ROUNDS

UNTIL IT'S TIME TO HIT THE GREENS,
WE'VE GOT JUST THE GAME FOR YOU.

Grab a seat and play a few rounds at Potawatomi Bingo Casino in downtown Milwaukee. Enjoy more than 100 table games and 3,100 slots, as well as dining and entertainment.

For information on discounted rates at our preferred hotels and to learn about our latest golf offers, visit PAYSBIG.COM/GOLF.



HAVE A SMART PHONE?
Use your 2D Code Application to view the current offer.

-POTAWATOMI-
BINGO • CASINO®

MAKE A SURE BET—KNOW YOUR LIMIT.

1721 WEST CANAL STREET • MILWAUKEE, WI 53233 • 1-800-PAYSBIG • PAYSBIG.COM
MANAGEMENT RESERVES ALL RIGHTS • GAMBLING PROBLEM? CALL 1-800-426-2535
©2013 FOREST COUNTY POTAWATOMI COMMUNITY, WISCONSIN



Fred Funk



A legendary course.

Legendary players.

And you can be right in the middle of it all.



Rocco Mediate



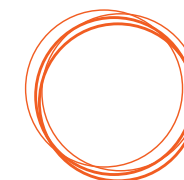
Bernhard Langer



Hale Irwin



Fred Couples



Encompass

CHAMPIONSHIP™

presented by **careerbuilder**®



June 17–23, 2013
North Shore Country Club
Glenview, Illinois

Buy tickets online now and save \$5 on each ticket. 18 and under free every day.

Follow us on Twitter Like us on Facebook
encompasschampionship.com

Features

12 Dad's Day Gift Guide

20 North Shore CC Welcomes Champions
By Tim Cronin

28 Destination: Geneva National



Photos, cover and this page: North Shore CC

Media sponsor of



Departments

- 5 Notes from Greg and Dave**
- 6 The Good Stuff**
New Products
- 8 Fitness Edge**
Training for Golfers
- 14 GC Spotlight**
Arrowhead GC
- 16 Sweet Home Chicago**
News from the City and 'Burbs
- 32 Profiles**
The Golf Practice
- 36 Dr. Jim Suttie**
The Swing Doctor
- 38 Dave Pelz**
Short Game Guru
- 40 Carl Rabito**
The Full Swing
- 43 GOLFChicago Map and Directory**
- 48 On the Shelf**
Golf Between the Covers
- 49 On the Corkscrews**
Notes from the World of Wine
- 50 From the Fringe**
Jim Owczarski on the PGA Tour

NOTES FROM GREG AND DAVE

Mother Nature had it all wrong last month. April came in like a lion and, as of late April at least, appeared to have little interest in transforming into a lamb. Snow after Spring Break, the second 100-year flood in a decade, and another 'anchor putter' winning a major were enough to send us indoors to tennis courts and bowling alleys. Survival, happily, is built into the genetic code of all Midwesterners. We are not going to quibble about April's soggy playing conditions, mostly because we have a bigger issue that hits closer to home, which is:

Why Do Dads Get Short-Changed on Their Special Day?

Our wives and mothers get to walk the red carpet for a day of pampering. We, on the other hand, are recipients of a shiny new hedge clipper. Or maybe a car-washing wand attachment for the hose.



"Go out and give it a try, honey! Don't forget to clean the smudges on the inside of the windshield!"

"Gee, thanks."

Why are we grilling dinner after we repair the scratches on the left fender following an over-spirited workout with the new car-washing wand? This conundrum may just be why we talk to ourselves in the garage. And why we three-putt. And

why our swing tempo is as smooth as a gap-toothed zipper.

Listen: we are not looking for our families to plan a special, over-priced brunch at a favorite restaurant. Nor do we desire a scenic picnic in the park, or even a home-made breakfast in bed. But maybe this year, give us something we really want: an early morning tee time. Join us out on the dew! You needn't worry about following up that thoughtful and gracious gift with a cookout in the afternoon. By then, after all, the leaders will be making the turn at the US Open. So just bring out some cheese, crackers and maybe something wrapped in bacon and join us on the couch. Who needs to worry about cholesterol when America's greatest drama is unfolding right before our very eyes. In high-definition, to boot!

Putting our whine and cheese aside for a minute, we dedicate this issue to all Dads out there. Remember to take care of the big guy whose passions—along with precision-sculpted hedges and shimmering automobiles—extend to golf. Few things in the life of an avid player say "Happy Fathers' Day" better than a box of Pro V1s, wouldn't you agree? Presented, of course, with a lovingly crafted homemade card from the little ones.

Now time to find that lawn edger present from last year. With a few minor modifications, we might be able to convert it into a dandy, if a bit noisy, ball retriever. Fore!

GLENMORANGIE
SINGLE MALT SCOTCH WHISKY



Unnecessarily Well Made

You don't get to be Scotland's favorite single malt by being 'quite' well made.



www.glenmorangie.com

Please Drink Responsibly. Glenmorangie Single Malt Scotch Whisky, 43% Alc./Vol., ©2011 Moët Hennessy USA, Inc., New York, New York

SUBSCRIBE TO GOLFCHICAGO

Free Golf* with Your Paid Subscription

Chicago's Premier Multimedia Golf Source & Authority
Delivered To Your Door Seven Times A Year

Visit www.GolfChicagoMagazine.com for details

Scan this QR code with your smart phone to be added to our e-newsletter!



*At participating golf courses



GOLFChicago

Chicago's Premier Multimedia Golf Source & Authority

Founder: Bill Daniels

Publisher: Dave Weretka

Editor: Greg Jourdan

Art Director: Stephen Hawk

Anderson Young & Associates

Senior Writers: Neal Kotlarek and Jim Owczarski

Editorial Assistant: E. Powell

Instructional Staff: Dave Pelz, Carl Rabito, and Todd Sones

Contributors: Erik Allie, Tim Cronin, Leo McNeal, Rory Hughes, Greg Martin, Todd Mrowice, Larry Nestor, Dr. Jim Suttie, and Sheri Warren

Photography: Greg Jourdan and Group 27

Advertising and Marketing inquiries should be directed to:

Dave Weretka

815-741-8005

dweretka@golfchicagomagazine.com

Editorial inquiries should be directed to:

Greg Jourdan

gjourdan@golfchicagomagazine.com

Business Offices

3701 Juniper Avenue

Joliet, IL 60431

815-741-8005

Fax: 815-741-8112

dweretka@golfchicagomagazine.com

Editorial Offices

490 Meadow Lane

Hinckley, IL 60520

815-286-3511

Fax: 815-741-8112

gjourdan@golfchicagomagazine.com

© Copyright 2013

No part of this publication may be reproduced without express written permission of the publisher. No part may be transmitted in any form by any means, including electronic, mechanical, photocopying, recording, or otherwise, without prior written permission from the publisher. Publisher accepts no liability for solicited or unsolicited materials that are lost or damaged. Opinions expressed by editorial contributors do not necessarily reflect the opinions of the publisher.

GolfChicago Magazine is published 7 times per year: March through September.



Scotty...I Need More Power!

You might not be an impatient Starship captain, but we have all come to rely on our 'communicators' regardless of where we are. Gimme Charge lets you charge your phone, GPS device, tablet computer, speakers, or anything else that plugs into a USB port, right from your golf car! Simply plug the Gimme Charge into the car's inbound charging port, then connect your existing USB charging cable between the Gimme Charge and your device and draw power from the car's reserve. You'll never have to worry about a low battery on the golf course again!

\$69.95
www.gimmecharge.com



The Black Dress

It is short. It is stylish. And it is from Nike. Every woman has a little black dress in her closet, now she has one for the course. It is more than meets the eye, yet simply called The Nike Dress. With detachable inner shorts, this dress can be customized to wear with leggings or shorts. The upper has laser perforations for breathability during those mid-day rounds. The upper is fully lined, while the lower garment is made from stretch woven fabric. On the course or on the patio, add the Nike Dress to your list of 'must have' options in your closet. There is even a pocket for a scorecard!

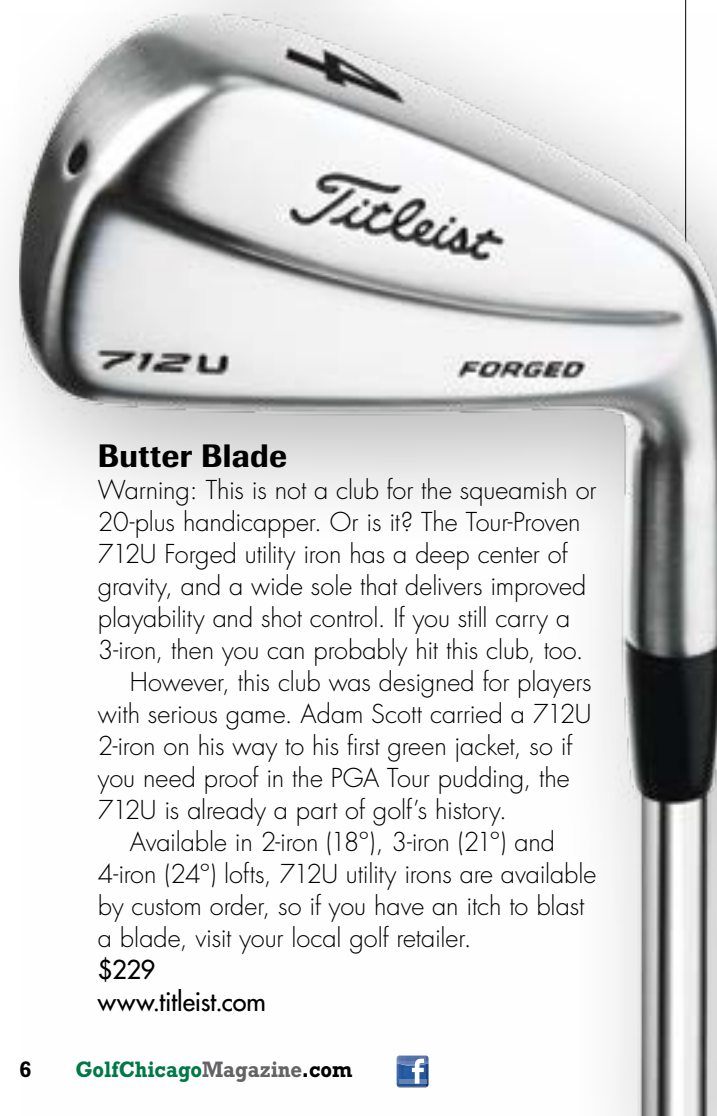
\$120
www.nikegolf.com

On the Watch

Garmin's Approach S3 is ideal for those who struggle with point-and-shoot yardage devices. The new Approach S3 has a touch screen and all the features of other handheld measuring devices. In addition to a glove-friendly high-resolution touch screen, the S3 provides dogleg and lay-up distance, not to mention a digital scorecard for stroke and Stableford scoring.

The S3 is also a fully functional watch with an odometer for those counting steps. Our favorite feature is the "measure" mode. This feature allows you to boast of 300-yard drives and 200-yard 7-irons. After your purchase, there are no subscription fees and there are over 27,000 courses available in the U.S. database.

\$349.99
www.garmin.com



Butter Blade

Warning: This is not a club for the squeamish or 20-plus handicapper. Or is it? The Tour-Proven 712U Forged utility iron has a deep center of gravity, and a wide sole that delivers improved playability and shot control. If you still carry a 3-iron, then you can probably hit this club, too.

However, this club was designed for players with serious game. Adam Scott carried a 712U 2-iron on his way to his first green jacket, so if you need proof in the PGA Tour pudding, the 712U is already a part of golf's history.

Available in 2-iron (18°), 3-iron (21°) and 4-iron (24°) lofts, 712U utility irons are available by custom order, so if you have an itch to blast a blade, visit your local golf retailer.

\$229
www.titleist.com

Please Pullover, Sir

New for 2013, Antigua introduces the Performance-72™ (PRF-72) styles into its Men's Hybrid Pullovers Collection. The launch of the Performance-72 represents the benchmark for quality, fit, style, and performance. Form and function blend in the Flare and Omega lines, which feature Desert Dry™ moisture management technology and a ¼ zip placket.

www.antigua.com



In the Bag

While Tour Edge does not pay professionals to play their Exotics clubs on the professional tours, the brand has been in the hands of PGA Tour winners on their way to championships since the club line was introduced. The new XCG6 fairway woods are the club of choice for golfers of all playing abilities.

The latest model has a larger titanium cup face and has two stock shaft options that include the Matrix Ozik and Graphite Design AD Tour. The Batavia-based company boasts that it is the longest Exotics fairway wood they have produced. With a boomerang face, a premium shaft, and the innovative combo brazing process during construction, par 5s are at your mercy.

\$349.99
www.touredge.com

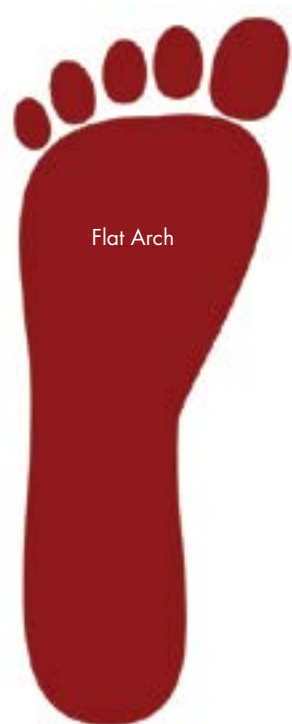


If the Shoe Doesn't Fit...

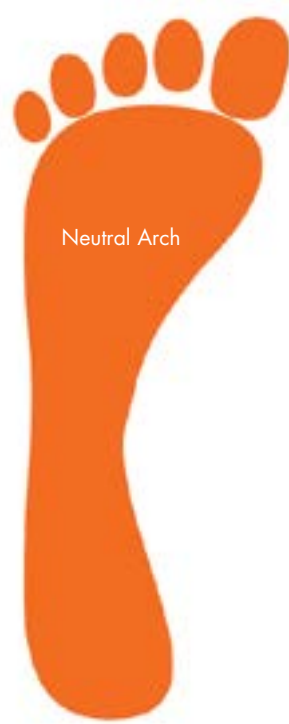
For the active golfer, choosing the right golf shoe is an integral part of staying healthy on the course. Not long ago, golf shoes were a pair of thin-soled wing tips with metal spikes, and golfers replaced them about as frequently as we elected a new president. Fortunately, manufacturers have developed golf shoes that offer support, stability, performance, and comfort. Golf shoes are now recognized as an important piece of golfing equipment and should fit your feet as well as your driver fits your swing. By following these few simple suggestions, you can determine your foot type and select the proper shoe.

Assess the Pronation

One simple way to assess the pronation your foot moves through while you walk is to look at your footprint when you step out of the shower. Flat-footed people will see more of their arch than people with a high arch as demonstrated in the illustration. All shoes should have an arch, but if you have a high arch, you need a shoe with higher arch support, while if you have a flatter foot, you do not need as high of an arch. For those who have orthotics, make sure the shoe has removable inserts, so they will work as intended.



Flat Arch



Neutral Arch



High Arch

THE FITNESS EDGE

Brad Jourdan PT, DPT

Assess the Shape of Your Foot

The three basic shapes are the Greek, Egyptian, and Peasant foot. The Greek foot has a second toe that is longer than the big toe, the Egyptian foot has toes that gradually shorten, and the Peasant foot has a second toe that is even with the first. A person with a Greek or Egyptian foot may be more comfortable with a shoe that is more rounded at the toes, whereas a person with a Peasant foot may want to look for a shoe that is less rounded at the toes.

Assess Your Foot Type

Determining whether you have a straight foot or a foot that curves inward from heel to toe is essential. You can assess your foot type by looking at a line on the bottom of the foot from the center of the heel to the tip of the second toe. Is this a straight line or a gradual curve towards the big toe? If you pick a shoe that does not match the curve in your foot, you will have a premature breakdown of the shoe and potentially cause foot or toe issues.

A shoe should support and work with your feet, so use these two simple tests to find the best shoe for you. Push the front

of the shoe upward and back to see if the natural bend of the shoe occurs at the ball of the foot, rather than the arch. Next, twist the shoe for stability. If it gives like a pair of house slippers, you will not receive proper support during your swing or when walking on uneven terrain. If you select a shoe that bends at the arch or twists easily, it can ultimately cause undue stress of the foot and possible injury.

When you are purchasing shoes, the old saying, "What you pay for is what you get" is a solid rule. Just as the \$99 driver will not give the results of a high-end driver, cheap golf shoes will not give the performance the active golfer is seeking. Furthermore, a cheap pair of golf shoes could cost you in the future if they cause problems with your hips, knees, feet, and back, requiring a doctor's attention. Buy the best pair of golf shoes you can reasonably afford, and you will be much happier and healthier in the long run. You will make up the difference by saving cart fees because a good pair of properly fitting shoes will be more comfortable when you walk the course as well as give you a solid foundation for your best swing.

THE GOOD STUFF EXTRA: GOLF SHOES



M:PROJECT™

FootJoy

The latest from FootJoy, M:PROJECT delivers a lightweight, low-profile shoe that places a premium on stability by keeping your feet closer to the ground. Available in cleated and spikeless styles, M:PROJECT affords more room for your toes to curl and grip as you activate the launch sequence.

Our take: Soft, flexible leather upper and low-profile outsole keep your feet in tune with the turf. If you curl your toes to start the downswing and want the sensation of bare feet, then this is the shoe for you!

\$145 Cleated

\$135 Spikeless

www.footjoy.com



Lunar Control

Nike Golf

Nike's full-length Lunarlon cushioning system is the industry's leader for comfort. The new Lunar Control is over an ounce lighter (per shoe) than previous models and the company's Flywire mid-saddle wrap delivers supreme support. The lightweight Flywire allows your foot to move naturally while providing support.

Our take: This is a shoe for 36-hole-a-day players. Nike has taken Lunar Control to the apex of performance and comfort and your feet will be grateful. It cannot get much better than this.

\$159.99

www.nikegolf.com



adicross Tour

adidas Golf

adicross Tour's PUREMOTION™ construction is a new performance design that allows more rotation and more freedom of movement to encourage a natural swing. Moreover, this performance shoe does not sacrifice comfort since a CLOUDFOAM™ sockliner will leave you walking on sunshine. adicross Tour is pioneering golf shoe technology with a laundry list of patented materials and construction methods. The real test is on the course, and this shoe could be the 15th club in your bag.

Our take: This shoe delivered the most traction of the three shoes we tested and delivers speed, confidence, and control from any lie on the course. We cannot wait for the spikeless model (\$150), which will be available next month!

\$200

www.tmag.com



HAVE MORE

Fun

The better you play, the more fun you have. That's why we are dedicated to helping every golfer play better.

And it's why our Custom Fit/Play Better Guarantee means if you don't play better with your new custom-fit clubs, you can bring them back within 30 days for full in-store credit.

GUARANTEED.

Golfsmith[®]

Visit our 5 Chicagoland locations, including our newly remodeled stores in Schaumburg

and Lincoln Park, for more of what you love - more simulators, more clubs and more fun.

©2013 Golfsmith



Whether he is headed to the course or leaving town for a business trip, ShaveTech will give dad a smooth face. ShaveTech is a portable razor that is charged using any standard USB port. The sleek design will fit in a pocket and give him a darned close shave.

He'll appreciate the convenience, while mom will appreciate the effort.

\$29.99
www.shavetech.com



It is high time for dad to turn in his clip-on sunglasses for a pair of cool shades. New for this season, World Cup sunglasses from Maui Jim are for golfers who prefer a full-frame style. The sporty World Cup shades incorporate Maui Jim's MauiGradient™ technology. Prescription lenses have a darker tint that gets progressively lighter moving down the lens.

\$219
www.mauijim.com



Although the weather is warming, there are still plenty of cool evenings ahead to enjoy a glass of port on the deck. Father will especially appreciate Graham's 20 Year Old Tawny Port. High-quality wine is blended and aged for twenty years [on average] in seasoned oak casks, and finally emerges as this rich, smooth port. The flavor features the traditional 'nutty' character of almonds and pecans, complemented by raisins and orange peel. The finish is long and satisfying. Serve slightly chilled in white wine glasses. The bottle will keep four to six months after opening, but why wait that long?

\$59
www.grahams-port.com

Give your father Sunice for those cool mornings or damp dawns early in the season. When an extra layer is needed without the extra bulk or weight, the Allendale SuperLite FX™ Pullover is definitely the ultimate choice. A chest pocket zipper surrounded by laser cut seal tape, moisture wicking properties, and bright color combinations are just a few of the details that make this piece stand out from the rest.

www.sunice.com



As dad's waistline mirrors the ebb and flow of the tides, Nexbelt™ is an innovative belt that allows adjustment to the ¼ inch and can allow adjustments up to 15 waist sizes. Nexbelt's X-Factor and Go-In belts deliver form and function with a ball marker hidden in the buckle. Add panache to pop's pants with a belt that can literally do it all.

\$59.99
www.nexbelt.com

Dad's Day Gift Guide

Show him that he is still the Top Pop

After a hard fought round of golf, give your top pop something he can slip into. Buffalo Jackson Trading Co. footwear offers a style to suit his tastes, but we love the Laramie slip-on for driving in the car, and after driving from the tee box. Made of North American Bison hide, each pair is handcrafted. Unlace those spikes, peel off your socks, and then slip on a pair of loafers from Buffalo Jackson Trading Co.

\$195
www.cbfootwear.com



For the adventurous papa, Glenmorangie offers the Discovery Pack. It includes a 750ml bottle of Glenmorangie Original, plus 50ml sampler bottles of Glenmorangie Lasanta (sherry finish), Quinta Ruban (port finish) and Nectar D'Or (sauternes finish) to help dad broaden his whisky horizons. All four of these whiskies are nicely balanced, with fruity and floral flavors complemented by creamy vanilla.

The Lasanta is particularly appealing, with nuttiness and the sherry influence evident in the final profile.

\$40
www.glenmorangie.com



Give the gift of sweet threads. Martin Golf introduces two new patterns for their popular Men's Popover shirt, now available in a Gingham Check and Bengal Stripe, both offered in the Riviera color palette. A new feature for the self-fabric collar shirt is the use of a jacquard pattern, which gives an illusion of being a solid shirt from a distance, but a closer look shows that there is much more design and texture than what appears to the eyes at first glance.

www.martingolfapparel.com



RAISING THE BAR FOR PUBLIC GOLF IN AMERICA

Wheaton's Arrowhead Golf Club



B

Boasting a clubhouse that shames just about every private golf club in Chicago, Arrowhead Golf Club opens the 2013 season with a renovated course which has golfers chomping at the bit to play. As locals know, a weekend tee time at Wheaton's most popular course is a platform for a fun day on the turf.

Greg Martin wants to keep the fun in golf. Martin is a golf course architect who specializes in redesign. "Our industry is in the middle of a correction. Arrowhead Golf Club is a great example of what we need—a course that's playable, fun, and affordable."

Three years ago Martin was hired to address concerns over maintenance and playability at Arrowhead Golf Club, a Wheaton Park District managed facility where golf has been played for over eighty years. This spring when it re-opens, Arrowhead Golf Club will boast 27 renovated holes. One of Chicagoland's favorite golf courses has redefined expectations for public golf. "Sometimes people think a fun course means we've watered it down," says Martin. "Not true. I can tell you, it's easy to make a course hard. It's a lot more difficult to make it fun."

Special attention went into reshaping Arrowhead's bunkers, setting up tees, and improving drainage. A new type of white, angular sand has been installed. The appearance may remind golfers of Augusta National, but the bright white material is more than just eye candy. The new sand helps reduce washouts from heavy rains and decreases maintenance time. Martin adds, "I think everyone will enjoy the course changes, but the biggest impact will be for better golfers. They are going to have to think about their game."

Another focus of the redesign was shaping the course into something both environmentally and economically sustainable. "Arrowhead has been a great client. Surrounded by forest preserve, this course highlights the existing landscape, that beautiful Illinois rolling flatland." Martin notes, "There's no false esthetic here." Martin thinks Arrowhead's public course status makes it an undiscovered gem. With its recently renovated clubhouse, restaurant, and wedding and banquet facilities, it is often mistaken for a private club.

In terms of the golf experience, Martin thinks, "Public golf has to do more, not less. You have to address the needs of a nervous

new golfer while providing a course that's engaging for the better golfer."

"Absolutely true!" says Billy Klemz, Arrowhead's Professional, "Arrowhead is a course that can be used by every golfer, including people looking for a challenge and people who want to socialize and have fun outdoors. I really 'got it' when I played with a group of guys who didn't break 100, and they had just as much fun as I did. It's brilliant!"

The golf industry has suffered with the economic downturn over the last few years. Arrowhead proves that excellent service and fun are the secret to repeat visits. According to Klemz, "To get a golfer to come back, the experience has to be fun. We have a rock star staff that is great at making friends. This is what's been neat about the redesign. People come in and thank us after they play. Now, we really do have something for everyone."

Arrowhead Golf Club
26W151 Butterfield Road
Wheaton, IL 60189
630-653-5800
www.arrowheadgolfclub.org

SWEET HOME CHICAGO

Find us on Facebook

Champion Tour's Beck Talks Up Chicago Golf

While Chicago resident and former PGA Tour player Chip Beck was in town talking up the upcoming Encompass Championship June 17 - 23rd, we took the liberty of asking him about other topics of interest as well. Here's what he had to say about:

Life on the Champions Tour: "We know that if it wasn't for our sponsors we'd be playing for a \$5 Nassau. What we do best is entertain better than any group. We understand what it's about. When fans come to a Champions Tour event they can talk to the players and enjoy the parties with them."

Favorite Chicagoland golf courses: "I like the Merit Golf Club because it's open prairie style golf. At the highest point on the course, you can see all the holes except for maybe one or two. Others would be Medinah, NorthShore, Butler National, and Knollwood."

Aging Gracefully: "If you take our best scores, we'd beat a lot of the young kids even with them hitting it 50 to 70 yards longer than us. That's because the guys on our tour know course management and we know how to score. They're not going to be choking down the stretch and throwing away strokes. They would have a hard time beating us on our golf courses I'll tell you that right now. We're very competitive and our best players are hard to beat."

The Future: "I hope that I'm still playing some golf. I have great associations here in Chicago and down in Naples, Florida, so I'm looking forward to broadening my scope. I'm involved with The First Tee and enjoy giving back. Every age has its benefits."



GOLFChicago Challenge on Facebook

Does this hole look familiar? If you are the first to correctly identify it, you will win a \$25 Golfsmith Gift Card.

'Like' GOLFChicago Magazine on www.facebook.com, then post your answer after May 15. Earlier entries will be not be eligible for the prize.

Cantigny Golf Releases Golf School, Workshop Schedule

Wheaton's Cantigny Golf has announced its spring and summer schedule of events headlined by a Memorial Day Weekend Golf School May 25-26. This two-day program for \$199 includes instruction in all areas of the game, course strategy, and nine holes of golf with a staff professional. The Saturday session is 9 a.m. – 4 p.m. The Sunday session is 9 a.m. – noon.

Those looking to get physically fit for the golf season are invited to attend various golf fitness workshops at Cantigny. On May 7th, the theme of a workshop is "The Most Important Piece of Golf Equipment – Your Body." On Tuesday, May 21st, the topic is "Prevention and Management of 'Golfer's Shoulder.'" Each workshop is conducted by Dr. Paul Callaway, director of golf fitness. Sessions begin at 7 p.m. Cost is \$10 for adults and \$5 for junior golfers under 18. Reserve your place by calling 630-567-7572 or e-mail Paul@CallawayGolfFitness.com.

Eighteen holes of match or medal play will teach you more about your foe than will 18 years of dealing with him across a desk. —Grantland Rice



DOWN MEMORY LANE

Tim Cronin

Who-hoo for Lew

It was the shot seen 'round the world. Well, at least that part of the country watching ABC on Sunday, Aug. 9, 1953. The network's cameras were trained on the 18th hole at Tam O'Shanter, and minutes after Chandler Harper's two-footer for a birdie 3 gave him the lead and likely victory in the World Championship, there, out in the fairway some 104 yards from the cup, was Lew Worsham, who had just birdied the 17th.

Ol' Lew had been denied at Tam before. He was almost the official club bridesmaid.

He would not be denied this time. With a wedge in hand, Worsham swung. It wasn't a pretty shot, this sclaffed wedge. It came in on a low trajectory, one not likely to cuddle up to the cup. But Worsham was lucky. It landed between the edge of a bank of the Chicago River and the green, allowing it to bounce. It bounced three times, then disappeared into the cup.

An eagle 2! And victory! (And \$25,000, the biggest prize in golf up to that time.)

"I am shocked, he sank it!" three-time Masters winner Jimmy Demaret, interviewing Harper, told the ABC audience.

George S. May had bought network TV time for the last hour of the World Championship since 1948, but this is the one everyone would remember, including Harper, who said, thinking back on Worsham's close calls at Tam, "Maybe the joint owed it to Lew."

Indiana's Lost Marsh G.C. Announces Golf Schools

Hammond's acclaimed Lost March Golf Course on 129th Street has announced a schedule of comprehensive one-day golf school packages which run noon – 4:30 p.m. on Saturdays throughout much of the golf season. Dates include May 4th, May 18th, June 1st, June 15th, July 6th, July 20th, August 3rd, August 17th, and August 31st.

The sessions feature video swing analysis; full swing instruction and a game improvement plan; short game instruction and game improvement plan; equipment analysis and fitting advice; lunch; a manual; and a 3-hole playing lesson (weather permitting). Price per student is \$100 with a maximum class number of 10.

For more information, call the golf course at 219-932-GOLF.

The older I get, the better I used to be. —Lee Trevino

Wadkins Talks Up Golf Technology

Prior to his appearance at the Chicago Golf Show in February, former PGA Tour star and current Golf Channel analyst Lanny Watkins had an interesting observation all golfers should consider when having second thoughts about transitioning to a new high-tech driver, "I'm 63 and have had multiple back surgeries. Yet I still hit the golf ball farther today than I did when I was on Tour. So now you tell me if golf balls and golf clubs have improved through the years."

Ronan Thompson Foundation Hosts Fundraiser

Mark your calendar for Friday, June 14th when golfers will tee off at Algonquin's fabulous Golf Club of Illinois for a fundraising benefit on behalf of the Ronan Thompson Foundation. Called the Rockin' the Greens Fore! Ronan Golf Outing, the event starts at 1 p.m. and features golf with cart, lunch, dinner, and entertainment all for \$125 per participant. Registration is available at www.foreverkidsfoundation.org

The Ronan Thompson Foundation is a non-profit organization dedicated to finding a cure for neuroblastoma, a form of childhood cancer. The group's short-term goal is to create a world-class neuroblastoma research and care center dedicated to funding treatments of the disease.

Baseball reveals character; golf exposes it.

—Ernie Banks



White Pines to Host Golf Fest Chicago

The Illinois PGA in conjunction with Bensenville's White Pines Golf Club has announced the Illinois PGA's Golf Fest Chicago 2013 to be held Sunday, June 9, from noon – 6 p.m. The free admission event will include instruction by area PGA professionals, equipment demos, golf clinics, skills challenges, celebrity appearances, and golf clinics. And, promises Geri Johnson, Director of Marketing and Communications at the Bensenville Park District, "lots and lots of family fun."

The event will be held on the grounds of the 36-hole White Pines G.C. & Banquets, 15500 W. Jefferson Avenue in Bensenville. For more information and Golf Fest updates, visit the Illinois PGA website: www.ipga.com

Evans Scholarships Awarded To Caddies Across Chicagoland

Ninety-four hard-working caddies from across the Chicago area have been awarded Chick Evans Caddie Scholarships, which include full tuition and housing at premier colleges across the Midwest. Evans Scholars are golf caddies who are selected based upon four criteria: a strong caddie record; excellent academic history; demonstrated financial need; and outstanding character. The selected students will attend a university where the foundation owns and operates an Evans Scholarship House. These include Northwestern University, University of Illinois, Northern Illinois University, Indiana University, Michigan, Purdue, Wisconsin, Marquette, and Notre Dame. The Evans Scholarship is valued at more than \$70,000 over four years.

"These young men and women have excelled in academics and in service to their schools and communities," said John Kaczowski, president and CEO of the Western Golf Association. "We welcome them to the Evans Scholars family and look forward to their continued success as college students."

The Western Golf Association, headquartered in Golf, Illinois, has administered the Chick Evans Scholarship Program through the Evans Scholars Foundation since 1930. It is among the nation's largest privately funded scholarship programs. Currently, 835 caddies are enrolled in colleges across the nation as Evans Scholars, and more than 9,600 caddies have graduated as Evans Scholars since the program was founded by famed Chicago amateur golfer Charles "Chick" Evans Jr.

Scholarship funds come mostly from contributions by 26,000 golfers across the country, who are members of the WGA Evans Scholars Par Club. Evans Scholars Alumni donate more than \$4 million annually, and all proceeds from the BMW Championship, the third of four PGA Tour Playoff events in the PGA Tour's FedExCup competition, are donated to Evans Scholars. Visit www.wgaesf.org for more information.

The golf swing is like a suitcase into which we are trying to pack one too many things. —John Updike



Blackberry Oaks Offers Lessons, Academy

Chad Johansen is a man on a mission. The head professional at Blackberry Oaks Golf Course founded the Chad Johansen Golf Academy in 2008 and oversees an amazing schedule of summer golf camps for juniors along with programs for business groups and individual lessons. The summer camps run for an hour each of four days. Beginner golfers 5 - 9 are provided sessions that start May 28 - 31 and continue June 11 - 14; June 25 - 28; July 9 - 12, July 23 - 26 and August 6 - 9. Each session costs \$80. The camps provide instruction on fundamentals, course etiquette, putting, and customized video golf lessons via the internet. Similar summer camps are available for juniors of different skill levels including advanced golfers (\$95 for four 1.5 hour sessions), and elite golfers ages 10 - 14.

A PGA professional, Johansen, along with assistant golf professional Justin Wyeth, is also offering a complete high school golfer academy sessions starting in late May and continuing through mid-June. The five-hour sessions include instruction on the full swing, putting, short game, course management, mental toughness, weekly golf academy tournaments, 20 hours of follow-up training sessions, and a 2013 Player Privilege Card.

For more information on the Chad Johansen Golf Academy, visit the Blackberry Oaks G.C. website: www.blackberryoaks.com.

The Cantigny Experience



Treat yourself to Cantigny! We promise a great all-around experience every time you visit.

- 27 beautiful holes
- Full-service Cantigny Golf Academy, open year-round
- Cantigny Youth Links—9 holes just for kids!
- Instruction clinics for all ages and skill levels
- Courteous, well-trained caddies
- Couples and family golf programs
- Banquets and golf outings

See more and book a tee time at CantignyGolf.com.



Cantigny Golf
27W270 Mack Road
Wheaton, IL 60189
630.668.8463

Cantigny Golf is part of the Robert R. McCormick Foundations



Experience... LEGENDARY GOLF

...and wake up only a 9 iron away from the first tee

THE INNS
OF GENEVA NATIONAL

STAY & PLAY PACKAGES STARTING AT

\$119 IN THE SPRING **\$149** IN THE HEART OF THE SEASON

Price per person and based on double occupancy.

Pre Season Rates available with packages starting at \$89 per person through May 2, 2013.

GENEVA NATIONAL GOLF CLUB 262-245-3020 | GENEVANATIONALRESORT.COM
4 MILES WEST OF LAKE GENEVA, WI ON HWY 50

Chip it Closer - Sink More Putts - Improve Your Sand & Wedge Play

DAVE PELZ
SCORING GAME SCHOOL

Ready to Play Your Best Golf?

Join the Pelz staff at Cog Hill to learn the skills and confidence you need to take your game to next level. Change the way you look at *Up and Down*.

pelzgolf.com 800-735-9868

The Champions

Tour's Encompass

Championship is set to

join a long history of

marquee tournaments

at the esteemed North

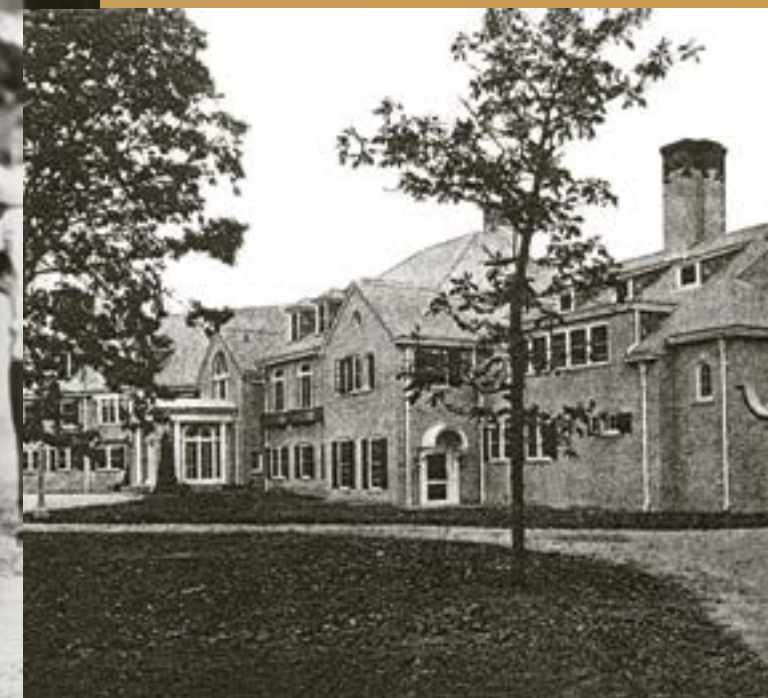
Shore Country Club

By Tim Cronin

Historical photos courtesy of
North Shore CC



CHAMPIONS TAKE FLIGHT AT NORTH SHORE



Walk around North Shore Country Club's course for only a little while, and three things strike you. The first is the size of the place. It looks larger than its 170 acres, a feat of optical illusion occasioned by subtle elevation changes and plantings in just the right places. The second tee seems a world away from the clubhouse.

The second is the difficulty. Never mind that North Shore, stretched to the limit, is barely 7,100

yards in length, which today is some 300 yards short of the major championship norm. What isn't there in length is very much there in strength.

The third is the course's subtlety. Extra length is mooted when the need for placing the tee shot in the right place to reach tucked pins, or the proper portion of the green for a potential birdie putt, is considered.

This is not true of every modern-day course, where brute strength is

demanded above all. That's why North Shore is something of a classic, a hidden-behind-hedge gems that only occasionally presents itself to the public.

Next month is one of those times, when the Encompass Championship, a Champions Tour tournament with a hybrid pro-am format, comes to the posh private club in Glenview.

It's fitting that the 50-and-over set will be playing North Shore. That

Goodman
would first
make even
more noise in
the U.S. Open
at North Shore,
scoring a
course-record
66, and the
lowest round by
an amateur in
an Open.



demographic of professional golfers, those remembering swinging persimmon drivers, will be able to navigate a course that demands thinking and precision over pure power. And it's possible that Tom Watson, Hale Irwin, Fred Couples and their pals might have even heard of some of the winners of championships conducted at North Shore over the years.

Here are five names, all with stories attached: Abe Espinosa, Johnny Goodman, Bud Ward, Jay Sigel and Ethan Tracy.

Tracy is the most recent titleholder at North Shore, having scored his victory in the 2011 Western Amateur. Aside from the occasional qualifying round, it was the first big show at the club in nearly 30 years, and Tracy made the most of it, knocking off top-ranked amateur Patrick Cantlay 1 up in the final match.

The finish, with Tracy making a par putt and Cantlay failing to sink a 12-footer for a birdie to extend the match, recalled the climactic moments of the 1933 U.S. Open on the same green all those years before.

Johnny Goodman, largely forgotten today, had come into the public eye by knocking off Bobby Jones in the first match of the 1929 U.S. Amateur at Pebble Beach Golf Links. Goodman didn't win the title, but beating Emperor Jones made for headlines larger than eventual winner Harrison Johnson received. It made Goodman a threat, especially after Jones retired following his Grand Slam exploits of 1930.

By 1933, Goodman was 23, selling insurance and chasing the U.S. Amateur. He would first make even more noise in the U.S. Open at North Shore, scoring a course-record 66, and

the lowest round by an amateur in an Open, in the second round. It shoved him into the lead at 3-under-par 141 on what was then a par-72 test, two strokes ahead of Tommy Armour.

The Open then concluded with a grueling test, 36 holes on a Saturday. Armour had won every major title. Goodman? His biggest wins were in the Trans-Mississippi Amateur. He'd lost the National Amateur title the year before.

Surely Armour, the master of the long iron, would overhaul the kid in the heat of a National Open furnace.

Surely not. Armour faded quickly, while Goodman opened with steady golf, the type that contends in an Open. His 2-under 70 and the field's flailings gave him a six-stroke lead entering the afternoon round. Reporters had their final-round stories half-written when word came



Walter Hagen,

the stylish

veteran and

pro's pro, was

also charging.

Desperate to

win one more

grand title,

The Haig was

scoring birdie

after birdie.



back that Goodman was fading. He played the last six holes of the front nine in 30 strokes.

Then Macdonald Smith, Goodman's playing partner on this day, put his arm around him as they made the turn and said, "Come on kid, let's play some good golf from here in."

Goodman settled down, but he'd come back to the field. And Ralph Guldahl, a young pro with a lumberjack's build – and a lumberjack's bludgeoning swing – was there to greet him. Nine strokes behind with 15 holes to play, Guldahl staged a furious rally, picking up seven strokes in a six-hole stretch of the front nine to trail by two strokes at the turn.

Walter Hagen, the stylish veteran and pro's pro, was also charging. Desperate to win one more grand title, The Haig was scoring birdie after

birdie in the final round – until he hooked a shot out of bounds on the 17th hole.

That consigned him to a final round 66 – some called it the best round in U.S. Open history aside from that one fateful tee shot – and a tie for fourth place at 4-over 292 with Armour.

Goodman was in the clubhouse first, his final round of 4-over 76 setting the target score of 1-under 287 that, after Hagen's miscue, only Guldahl would threaten. Like Goodman, Guldahl had never been a factor in the Open. He'd won in Santa Monica and Arizona, tournaments carrying little cachet and less pressure. Now he was bearing down on Goodman, and might have caught him early in the final round, but for a balky putter. He three-putted the first and

15th holes, and missed three putts inside five feet before reaching the 18th hole with a chance to tie Goodman with a par at the last.

Guldahl hit the fairway with his tee shot but sailed his approach into a greenside bunker. He splashed out to four feet and needed that to force a Sunday playoff.

He missed it. Goodman was in the clubhouse, listening to the radio broadcast telling him he'd won. The man who had beaten Bobby Jones had now replaced Bobby Jones as the most recent amateur to win the United States Open. And he remains that most recent amateur.

Goodman was back at North Shore six years later – two years after finally winning the U.S. Amateur – in an attempt to score a second U.S. Am title.





Arrowhead
GOLF CLUB

**Surrounded by
Forest Preserves**

All course enhancements
complete and open!

– Tees, greens and
fairways are bentgrass.

– Water comes into play
on 17 of the 27 holes.

– Lighted driving range,
putting green, chipping
green and bunkers.



26W151 Butterfield Road
Wheaton, IL 60189 | 630.653.5800
www.arrowheadgolfclub.org



Instead, Marvin “Bud” Ward was the winner, beating back high winds and the final-match challenge of Ray Billows to score a 7 and 5 victory to grab the Havemeyer Trophy. Ward scrambled out of trouble time after time and one-putted 12 greens to knock Billows off, but his best move came on the 10th hole in the afternoon round. Billows’ putt stopped four feet from the cup in a line with Ward’s. In the stymie era, Billows didn’t mark the ball. Ward would have to play around it. Instead, he played over it from about 12 feet, chipping his ball over Ward’s and into the cup to halve the hole and all but cinch the victory.

Ward would win another U.S. Amateur two years later, while Billows would be a three-time runner-up.

It was the last big tournament at North Shore for two generations. A run that began with Abe Espinosa’s come-from-behind three-stroke

victory over Johnny Farrell (and four over brother Al Espinosa) in the 1928 Western Open was over.

Not until 1983 would the tournament scene return, and it returned in style, with the U.S. Amateur. Jay Sigel, a Philadelphia insurance broker, collected his second U.S. Amateur crown in succession when he routed Chris Perry 8 and 7 in the 36-hole championship match. Sigel’s toughest match that week was provided by Franklin Park’s Roy Biancalana, who took the eventual champion to the 19th hole before bowing.

All the excitement occurred at North Shore only because another neighborhood club, one even more connected to its membership a century ago, decided not to uproot itself a second time for more spacious surroundings.

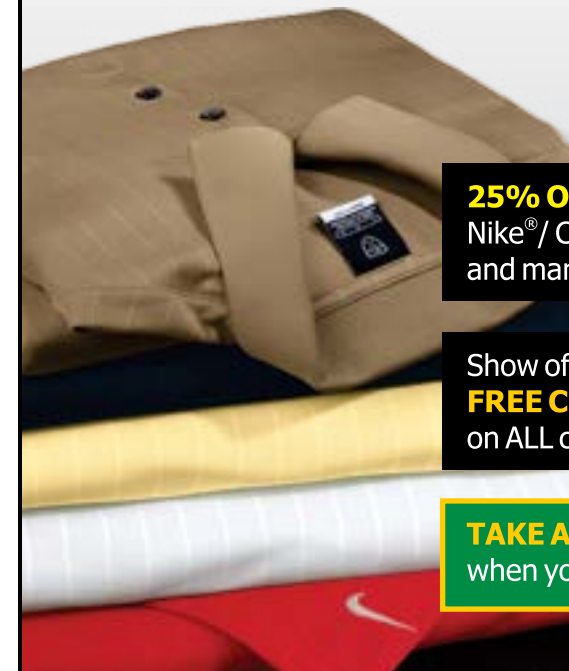
Had that move happened, there is every chance that this year’s Encompass would be taking place on

the same grounds, but at Edgewater Golf Club. However, in 1923, having held an option on 170 acres of farmland in the lightly-populated suburb of Glenview for some time, the board of Edgewater, perhaps remembering the club’s move from its original setting on Devon Avenue to its new location at Pratt and Ridge in 1911, decided to stay put.

North Shore Golf Club, with cramped quarters in Kenilworth, bought the option from Edgewater. In 1924, scarcely a year after hiring the architectural firm of Colt and Alison to design the course – Charles Hugh Alison did most of the work – the reorganized North Shore Country Club was open for business.

Now, Edgewater is long gone. North Shore thrives with a burly 18-hole layout that can test the best players in the world. Some of them will return next month, eager to see a course made for them.

You’re going to...
LikeThisGolfShirt.com



25% OFF ALL SHIRTS - ALL BRANDS
Nike® / Callaway® / Cutter & Buck®
and many other major golf outfitters

Show off your colors with
FREE CUSTOM EMBROIDERY
on ALL corporate orders (no minimum)

TAKE AN EXTRA 10% OFF
when you use promo code “GolfMag”

Visit www.LikeThisGolfShirt.com today



**Better Yourself
to Better Your
Game**

*“I will not give you one
more swing thought...
but you will have better
mechanics after you
see me.”*



Two Convenient Locations
Energy Training Center Pro-Fit
900 N North Branch 101 Joliet Rd.
Chicago, IL 60622 Dyer, IN 46311
312.501.1982
www.nike.com/nikegolf/ng360/home

John Dyrek
Certified NG360
Golf Performance
Specialist
34 Years of
Experience

Geneva National Celebrates Golf Greats with Great Golf

DESTINATIONS

Neal Kotlarek

Not too many years ago, golf course construction was booming across the Midwest and owners had to fight tooth, nail, and ball retriever to grab headlines in the local golf magazines. Each property worked to out-dazzle the competition with spectacular courses built by top architects who were provided with virtually unlimited budgets.

The charming resort community of Lake Geneva became the talk of the golf world in 1971 when the Playboy Club unveiled the second of two championship golf courses—the Scottish links-inspired Briar Patch (since renamed the Highlands Course) designed by Pete Dye and Jack Nicklaus. Other established courses in the area included the impressive Abbey Springs Golf Course in Fontana and the Dick Nugent-designed Lake Lawn Lodge Resort course in nearby Delevan.

But it was the visionary plans by the owners of Geneva National Golf Club that truly cemented Lake Geneva as a national golf destination. The foundation of a sprawling residential community on the shores of Lake Como would include three premier 18-hole courses designed by legendary Tour champions Arnold Palmer, Lee Trevino, and Gary Player. The Palmer and Trevino courses opened in 1991 while the Player course was completed in 2000.

The architects were provided a 1,600-acre property featuring elevation rises of 300 feet above the lake along with prairies, woodlands, and wetlands. By virtue of the changing landscape along with proximity to the sparkling waters of the lake, each course is distinct from its counterparts and is said to reflect the personalities of the designers.

Palmer Course

Known by fans as “The King” due to his reign on the international golf stage during the 1960s, Arnold Palmer established a second career as a renowned architect. Included among the over 300 courses built over the years by Arnold Palmer Design Company are the likes of Bay Hill Club and Lodge in Florida; The Legend at Shanty Creek in Michigan; and PGA West – Palmer Course in California. The Palmer Course at Geneva



Palmer Hole 17

National utilizes virtually the entirety of features across the land parcel including two holes that abut the lake.

The front nine is highlighted by No. 6; a magnificent 387-yard dogleg left par 4 framed by trees on both sides of the fairway. A carefully executed driver or fairway wood from an elevated tee sets up a short or mid-iron approach shot to an unprotected green. Keep the ball below the flagstick as the green slants severely from back to front.

The course's signature hole is the 573-yard No. 17 that plays from tee to green along the shores of Lake Como. Included by Palmer himself on his personal “Dream 18” of favorite holes, this par 5 calls for three challenging shots starting with a long drive that stays away from the watery depths to

the left of the landing area. Next up is a precision second shot avoiding trees and fairway bunkers on the left and wetlands on the right. The mid or long-iron approach shot must overcome a huge sand bunker in front of the green and the lake to the left. A par here is a reason to celebrate The King with an ice cold King of Bottled Beers following the round.

Trevino Course

Winner of six major championships over his storied career, Lee Buck Trevino has designed over 40 courses across the U.S. including the Golf Club of Texas in San Antonio and Spanish Dagger at Santa Teresa Country Club in New Mexico. The Trevino course at Geneva National features

forested land on 14 of its holes, including holes 1 through 10. Do not be alarmed by this feature, however, as huge landing areas allow players to swing away off the tees on this 7,120-yard layout.

The front nine is highlighted by the 520-yard No. 5. Referenced as Trevino's “signature hole” on the course, this dogleg right par 5 begins from an elevated tee over wetlands to a broad landing area. The second shot must skirt around trees that line the entire right side of the fairway leading up to a creek that traverses in front of the green. A short iron approach shot over the creek should set up a birdie putt.

Both par 3s on the back nine are long and beautiful. Framed on all sides by woodlands, the 210-yard No. 13 calls for a long-iron



Player Hole 16





Geneva National Clubhouse

or fairway wood to a green protected front and back by sand bunkers. Two larger sand bunkers likewise defend the large, sloping green on the 192-yard, No. 17. But the player can't just rip it off the tee as two more large bunkers protect the backside.

Player Course

Considered one of the Big Three players of the 1960s along with Palmer and Jack Nicklaus,

Gary Player won nine major championships over his storied playing career, spread out over all four majors. Nicknamed the Black Knight due to his preferred black slacks and black shirt fashion preference, Player is also a legendarily prolific designer with over 325 courses built on five continents.

Built over the property's most dramatic landscape, the Player Course at Geneva National features five par 3s and five par

5s including five consecutive holes on the back nine that flip-flop this combination. Considered by many to be the best par 4 on all of Geneva National, the 354-yard No. 4 features fairway landing areas split by huge sand bunkers. The area on the right is the far safer route as the one on the left is hidden from view off the tee. However

continued on page 41



Player Hole 3



**IF CLOTHES
MAKE
THE MAN,
THIS SHIRT
MAKES YOU
A GOLFER.**

ASHWORTH[®]

ALL WE DO IS GOLF.

AshworthGolf.com

Sleeves tailored for maximum movement without impeding your swing. One of the many details we've thought about, so you'll never have to.

©2013 Taylor Made Golf Company, Inc.

The Golf Practice: High-Tech Training

When looking for a facility to host an indoor training and practice facility, golf professional Pete Donahue and his partners worried that the 3,500 sq. ft. section of a Highland Park warehouse that they chose wouldn't do their dreams justice. Then an adjoining section of that same warehouse was vacated and everything they had hoped and wished for was within grasp. And, just like that, the 7,000 sq. ft. facility called The Golf Practice was born.

"We wanted to offer a unique facility," Donahue says. "From the practice putting green to the full-sized sand bunker to the ping-pong table you see when you step inside the building. We wanted to emphasize fun and creativity along with state-of-the-art technological aids."

A single walk through the recently opened complex shows that Donahue and partners Ollen Stephens and Christopher Oehlerking

accomplished their mission. The ping-pong table, explains Donahue, is to assist students with their eye-hand coordination. "Plus, it's a nice game to play when you've got some extra time on your hands," Donahue says with a laugh.

Beyond the entrance, there's a contoured putting green that allows students to practice putts with sweeping breaks. And there's a huge greenside sand bunker with fine sand to allow for practicing even buried lie bunker shots. Then there's the PGA Tour technological aids including a Trackman, SAM Putt Lab and a multi-high speed camera video system.

"Just as equipment changes in golf," Donahue explains, "so too have the expectations and demands of our students. They rightfully expect to have the best teaching tools at their disposal to speed up the learning process. So we went out and bought the best of everything available in the marketplace."

PROFILES

Neal Kotlarek

The center's Trackman Launch Monitor is located in a hitting bay to study flight, impact, and training statistics, including the attack angle and spin axis of the shot. "It's amazingly accurate and a great tool for both improving your game and for fitting you with the best equipment that suits your swing," Donahue says.

The Golf Practice's V1 Golf Video and V1 Video Academy is located in another hitting bay that features a flat screen TV for players to both see what they do and to compare their swings frame for frame with the swings of the pros. Thus, the instructor can compare and contrast a student's swing to that of a pro of similar build or swing path.

The facility's SAM Putt Lab provides accurate, real time feedback for all elements of the putting stroke using ultra-sound technology. Face rotation, alignment and swing rhythm are all analyzed by the equipment



SCOTLAND MEETS ROMEOVILLE!

Stacked sod-wall bunkers are not the only changes made to the newly renovated Mistwood Golf Club for 2013. From redesigned holes, natural stone lined lakes, and new tee boxes, this course now plays over 7,000 yards. Finally, our newly built Performance Center and the distinctive short game area will establish the memorable golfing experience you deserve.

1700 W. Renwick Rd, Romeoville, IL 60446 | 815.254.3333 | www.mistwoodgolf.net

Play through The Natural State.

Take a tour of Arkansas from tee to tee on The Natural State Golf Trail. With 12 courses to choose from, the trail takes full advantage of the diverse landscapes to challenge your game. For exciting things to do off the links as well, discover delicious dining, thrilling gaming, luxurious spas, unique shopping and more in vibrant cities and charming retreats always just a short drive away.

For more information, call 1-866-2GOLF-AR or visit NaturalStateGolfTrail.com

Mountain Ranch Golf Club, Fairfield Bay

1. Big Creek Golf and Country Club Mountain Home	
2. Eagle Crest Golf Course Alma	
3. Glenwood Country Club Glenwood	
4. Harbor Oaks Golf Club Pine Bluff	
5. Hot Springs Country Club Hot Springs (Two courses)	
6. Mountain Ranch Golf Club Fairfield Bay	
7. Red Apple Inn Heber Springs	
8. The Ridges at Village Creek Village Creek State Park	
9. Sage Meadows Jonesboro	
10. Stonebridge Meadows Fayetteville	
11. Tannenbaum Golf Club Drasco	





to assist in developing good habits and a consistent stroke.

When not giving lessons or running operations at The Golf Practice, Donahue, Stephens, Oehlerking, and PGA professional David Maslen manage the Learning Center at nearby Highland Woods Country Club. The outdoor private teaching area is located underneath a mobile canopy to keep students out of the rain during springtime and under the shade during the summer months. Group sessions and summer camps have enjoyed incredible popularity over the years. This season's sessions run throughout the spring

and summer with some lasting a full day and others offered in half-day increments.

The Golf Practice and the Learning Center are offshoots of the widely popular TeeToGreen Golf Academy and Junior Golf Camps taught by Donahue and his colleagues since the early 1990s. While the new indoor facility denotes an address change, the group's approach to golf remains a constant.

"We want students young and old to have fun learning how to become better golfers," Donahue says. "Our structured programs have proven to be a successful approach to instruction over the years. We offer programs

to help youngsters succeed in making their high school golf teams and continue their progression after that."

While the summer camps are geared toward youth of all age levels, adult instruction is available at all skill levels and for both individuals and groups.

"We are really proud of what we've built and what we've accomplished so far," Donahue says. "We aspire to becoming the place golfers visit to improve their games."

For more information on The Golf Practice, visit the facility's website: www.thegolfpractice.com.



THREE GREAT WAYS TO EXPERIENCE THE GOOD LIFE.



LOVE THE LIFE. LIVE THE FUN.

- 1 Take part in the 2nd Annual Sprint Triathlon, May 18th, presented by Lefler Dental and managed by DLT Events. To learn more, register online or join a relay team, visit TRItheVillage.com.
- 2 Set your course to great play on one of the eight challenging golf courses in the Village, visit HSVGolfing.com. Schedule your tee time: 501.922.2858.
- 3 Become a member for as low as \$275 per single and \$535 per couple. Learn more at HSVMembership.com.

.....
 Visitor Center | 121 Cordoba Center, Ste. 300 | Hot Springs Village, AR | 866.984.9963
 Links to What You Love: HSVLakes.com | HSVTrails.com | VisitHSV.com

Stay AND GOLF FREE

Smoked the driver 270 plus on the first hole.
 Drained a 12 footer for birdie on 18.
 Cinderella Story.

A luxurious room.
 Two free rounds of championship golf.
 The Brute. The Highlands.

Decadent dining. Drinks by the fire.
 Would I do it again?
 Let me put it to you this way.

Grip it and rip it.

THE MIDWEST'S PREMIER VACATION DESTINATION
 7036 Grand Geneva Way | Lake Geneva, WI 53147 | GrandGeneva.com | (800) 558-3417
*Valid any day of the week until May 31, then valid Sun-Wed for the remainder of the golf season. Tee time restrictions apply. See details at GrandGeneva.com



The Backswing

So, let's assume you have applied part one of this series from last month's *GOLFChicago Magazine* and your set-up and pre-swing fundamentals are sound. You now are ready to put your efforts into a fundamentally sound backswing.

Purpose of the Backswing

There are as many different backswings as there are people playing golf. Some are high, some are low, some are short, and some are long; some are quick and some are slow. The one commonality is they all look different. In any case, there are five things that all good backswings have in common. These five commonalities include the following:

- Loading of the club, the wrists, and the back elbow. This creates the needed leverage to create distance.
- A coil, or turn of the body, into the right hip. This will create sufficient weight transfer to generate momentum and speed on the downswing. This coiling process takes place around a centered head.
- Arc width, height, length, and depth.
- A synchronization of the arm swing, which provides the "up and down" of the motion and the body pivot, which provide the "around" of the motion.
- A position at the top of the swing that produces a direct route back to the ball.

The Takeaway

A fundamentally sound backswing starts with a good takeaway. The takeaway could be the most important part of the backswing. It must be low and slow. The big muscles of the shoulders, chest, and back should dominate the movement. The wrists don't start to cock until the club is waist high. This is called a "one-piece" takeaway. The function of the takeaway is to create enough width to enable the golfer to get his weight loaded up behind the ball.

The Loading Zone

Once the club reaches waist high on the backswing, the wrists will start to cock and the right elbow will start to fold. As this happens, the shoulders will continue to turn until they are fully turned to 90 degrees at the top. The top of the swing will produce three 90-degree angles. The shoulders, the wrists,

and the right elbow all have their 90 degree angles set in. The hips will turn about 30 to 40 degrees in response to the shoulder turn.

The Five Dimensions of the Arc

The backswing is made up of five dimensions: (1) Arc Length, (2) Arc Width, (3) Arc Height, (4) Arc Depth, and (5) Time. Long swings produce more power but are generally harder to time. Wide swings are shorter and well suited to the more inflexible golfer. This is called a width swing. The high swinging arc player is tall and thin with long arms and plenty of flexibility. The golfer that has a flattish golf

swing qualifies as a deep swinger. The drop swinger is the most common swing on the PGA Tour. The final dimension of the arc is time. The time and sequence of the backswing motion is important to get the downswing started right.

The position at the top should provide the golfer with the most direct route to the ball. The correct backswing provides you the best chance to come down on the most direct route possible to create maximum distance and direction.

To schedule a lesson with me at Cog Hill Golf Club, please call 1-800-765-3838.

INSTRUCTION

THE SWING DOCTOR



Dr. Jim Suttie



THE BEAR



A one piece takeaway insures a wide arc.



The backswing produces three 90s at the top: shoulder turn, wrist cock, and elbow fold. This produces power.

THREE GOLF COURSES • GOLF ACADEMY • GROUPS & EVENTS



They're as inspiring as they are demanding. Three signature courses sculpted by Mother Nature and designed by golf legends Jack Nicklaus and Gary Player. Both Golf Magazine and Golf Digest have called us one of the best golf destinations in the country. See for yourself. Stay and play at great rates! Visit our website or call for current offerings.

800-748-0303 | grandtraverseresort.com/golf

Owned & Operated by the Grand Traverse Band of Ottawa & Chippewa Indians



Watch Barefoot TV



Request our magazine



Friend us online



Bounce for Better Wedge Play

Find that most of my students are pretty tuned in to their woods and hybrids. They know what to expect from each club and can usually rattle off the key specs (loft, clubface angle, shaft flex, etc.). Although they're less informed about their irons and assume that what they bought off the rack works for their swings, they've often done some homework when it comes to their wedges. Most of them are aware of the trajectory and backspin they get with each one, as well as the loft built into each model. When I ask about bounce angle, however, the room usually just falls silent.

If this sounds familiar to you, then you may have a problem. It's critical to outfit your wedge set with a variety of bounces, and at the very least, you should be able to point out the wedge with the lowest amount of bounce and the one with the highest. Even if you own a perfect wedge swing, it's the bounce that

ultimately determines how each club will react with the turf, sand, water—or whatever else your ball may be sitting in—through impact. The bounce on your wedges is just as important as the attack angle of your swing. The two combine to help you maintain speed through the ball or—gulp—dig into the ground and slow down.

For example, let's say the ball is lying on hard, wet sand. If you try to hit this shot with a high-bounce sand wedge, you're going to have a difficult time getting the ball out of the bunker. But if you know that your lob wedge has less bounce and that less bounce performs better from this type of lie, you're in a much better position to save par. The opposite applies when you have to play a shot from soft sand. In this situation, more bounce will help the club glide instead of dig.

INSTRUCTION

SHORT GAME ADVISOR



Dave Pelz



Take a few minutes to research the bounce angle on each of your wedges. If your clubs don't have a bounce value stamped on them (for example, 55/12 means 55 degrees of loft and 12 degrees of bounce), ask your pro or custom club shop for help. The important thing is to learn if the range of bounces in your wedge set is wide enough to tackle whatever the course throws at you. Regardless of the lofts you carry, make sure that your wedges offer a low-bounce, mid-bounce and high-bounce option.

The perfect wedge set features loft gaps of 4 to 5 degrees between each club and a range of bounce angles to handle all the conditions in which you typically play. If your current set falls short of this standard, then you're just making the game more difficult—and adding strokes to your score—every time you play.



The Best Sister Courses In Illinois...



Highlands of Elgin has become a premier destination for thousands of golfers throughout the region. Nine new holes reclaim an old stone quarry, and take maximum advantage of the unique and dramatic landforms that were left behind, including a twelve acre quarry lake. The collection of eighteen holes now provides golfers with an adventure through a variety of unique golf holes in a beautiful setting.



Bowes Creek Country Club offers our patrons a private club experience at a public golfer price. Instead of standard green fees, the club offers a "member for a day" fee, granting access to unlimited golf with a cart and full use of the facility. Annual memberships are also available in an array of options suited to your needs.

875 Sports Way | Elgin, IL 60124
847-931-5950 | www.highlandsofelgin.com

1250 Bowes Creek Boulevard | Elgin, IL 60124
847-214-5880 | www.bowescreekcc.com

The Right Sticks for Juniors

After teaching golf for nearly three decades, I have seen great strides in the teaching of junior golfers, the most significant being clubs and equipment that actually fit the junior player.

Historically, adult clubs were simply cut down (shortened) to give a guesstimated length. This obviously has inherent flaws, i.e. weight of the club, lie angle, and shaft flex just to name a few. It would be akin to a father giving his child his dress shoes and asking the child to play basketball and wondering why he is running so slow and tripping all the time.

The length, weight, lie angle, and grip size of an improperly fitted golf club have devastating effects on the golf swing. Clubs that do not fit the player properly cause compensations. Unfortunately, the young players may believe and develop a feel for these swing compensations and assume his/her thoughts are correct. They will have a permanent mental swing flaw.

The address is the most significant mechanism of the golf swing. The address can be completely distorted if the length of the driver is incorrect. If the address is correct, the golf club should extend through your belt toward the sky. There should be a 90 degree angle created between your club shaft and your spine angle. If the length of the driver is too long, it forces the player's upper body to become too vertical. The upper body being too vertical leads to the player standing up and losing their spine angle during the backswing. The posture should remain the same throughout the backswing. The length of the driver for a junior should typically be $\frac{2}{3}$ of the player's height, i.e. if the player is four feet tall, the length of the driver should be 32 inches.

The length of the driver is just one simple example of how important it is to have appropriately fitted equipment. The effects can certainly be life long, good or bad.

If you have any questions about the fitting of golf clubs or the appropriate swing training, please contact us at the Bolingbrook Golf Club and check out our Cleveland Golf Tour Experience Fitting Center.



Club too long; poor posture



Correct club length; good posture



Club too long; incorrect backswing



Correct club length; correct backswing

INSTRUCTION

THE FULL SWING



Carl Rabito



Destinations

continued from page 30

you get there, the second shot involves just a short-iron to a huge, multi-tiered green.

The 169-yard No. 13 is my favorite par 3 on the course as its steeply elevated tee provides a dramatic view of both the green and the surrounding landscape. A single pot bunker in front of the green must be averted at all costs. That said, it is just as critical to avoid going over this large green as the area behind the putting surface slopes into the tree line.

David Leadbetter Academy

If 54 holes of top golf make you yearn to improve your game, the property's David Leadbetter Academy is a great place to start. Certified teaching professionals use the same technology and techniques that have helped improve the games of thousands of golfers over the years, from novices to PGA Tour pros. Programs available include mini-schools, retreats and private lessons.

Geneva National Resort

A stand-alone residential community since it opened, Geneva National now offers various options on accommodations for "Stay & Play" packages to create the newly named Geneva National Resort. The Inns of Geneva National consist of 36 guest rooms located just outside the course clubhouse. The newly renovated inns feature six deluxe guest suites overlooking the 18th hole of the aforementioned Player course.

Managed by and in partnership with Geneva National Golf Club, Geneva Ridges provides 146 guestrooms and suites, over 18,000 sq. ft. of meeting and banquet space, along with a full-service spa and indoor/outdoor pools. Dining options across the property include the newly renovated Hunt Club Steakhouse featuring great steaks and an award-winning wine list.

"We are more excited than ever to have people experience the new Geneva National Resort," says Kevin Paluch, General Manager and Chief Operating Officer, "The Inns of Geneva National and the addition of the Hunt Club Steakhouse will definitely be a game changer in the aspect of what we have to offer our guests. Whether you're a family looking to take a nice vacation or a couple looking to get away for the weekend, Geneva National Resort has all the amenities you need to make your vacation a great one!"

For more information on Geneva National Resort, visit the property's website: www.genevanationalresort.com or call 262-245-7000.

DRIVE, CHIP, PUTT, AND SAVE!



Bear Slide Golf Club, Cicero, IN



If picturesque courses and unmatched value are high on your summer to-do list, it's time your golf travels took you to beautiful Hamilton County, Indiana. Stay & Play packages start at just \$154 per person.

Visit IndianasPremierGolf.com to learn more.

- ★ BEAR SLIDE GOLF CLUB ★ BRICKYARD CROSSING ★
- THE FORT GOLF RESORT ★ PLUM CREEK GOLF CLUB
- ★ PRAIRIE VIEW GOLF CLUB ★ PURGATORY GOLF CLUB ★
- RIVER GLEN COUNTRY CLUB ★ WOOD WIND GOLF CLUB



IndianasPremierGolf.com

CENTRAL MISSOURI'S LAKE OF THE OZARKS GOLF TRAIL

OCTOBER 6 - 13 *You're Invited!*

BIGGER & BETTER!

Four Tournaments,
PGA Clinics, Demo Days,
Skills Challenges, Daily Prizes,
Discounted Golf & Lodging,
and more!

Second Annual

GOLF WEEK
GOLFWEEKONTHE TRAIL.COM

Look Your Best, On *and* Off the Course!



- Trusted, Comfortable, and Affordable Dental Care
- We Will Maximize Your Insurance Benefits
- New Patients Welcome
- We Love Kids
- Convenient Appointment Times Available
- State of the Art Sterilization Procedures
- Convenient Payment Options

630-789-0900
www.goersdentalcare.com
6700 Route 83
Darien, Illinois

Find our best specials and golf discounts only on **DuPageGolf.com**



Fabulous Golf at Forest Preserve Prices

Two 18-hole courses, two 9-hole courses, and an all-grass practice center with PGA / LPGA instruction

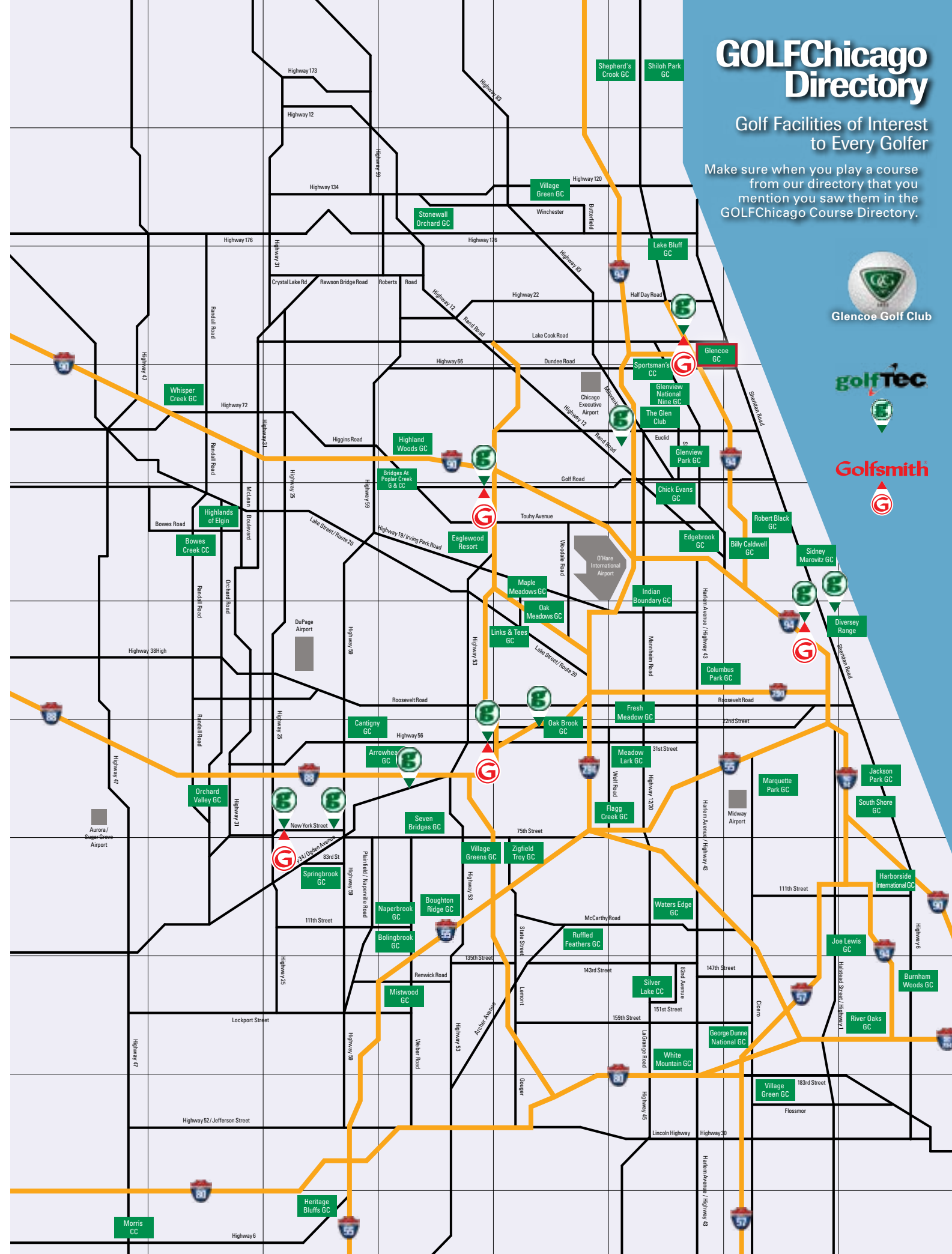
Outings, permanent tee-times, and more!

- Oak Meadows – Addison (630) 595-0071
- Maple Meadows – Wood Dale (630) 616-8424
- Green Meadows – Westmont (630) 810-5330

GOLFChicago Directory

Golf Facilities of Interest to Every Golfer

Make sure when you play a course from our directory that you mention you saw them in the GOLFChicago Course Directory.



The Driving Range & Golf Academy at Bolingbrook Golf Club

2013 Junior Golf Program

- Competitive Edge Junior Program
- Weekly Junior Camps
- Day-long Junior Camps
- Junior Leagues
- Group Lessons
- Family Night Clinics
- Private Instruction



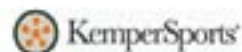
Registration Now Open



Home of Rabito Golf School

PGA Master Teaching Professional

1001 Kings Road
Bolingbrook, IL 60490
(630) 771-9400 ext. 4500
www.bolingbrookgolfclub.com





Arrowhead

630-653-5800
26W151 Butterfield Rd.
Wheaton, IL 60189
arrowheadgolfclub.org

Arrowhead Golf Club is recognized for its beautifully maintained course and inviting atmosphere.

Arrowhead is a public course which offers impeccable golfing conditions at affordable rates on three separate par 72 18-hole layouts surrounded by forest preserve. Players are enjoying new bunker renovations and enhancements to the West, East and South Courses. The practice area includes a lighted driving range, putting green and chipping green. Group and individual golf lessons available.



Bolingbrook Golf Club

630-771-9400
2001 Rodeo Drive
Bolingbrook, IL 60490
bolingbrookgolfclub.com

Bolingbrook Golf Club features an Arthur Hills and Steve Forrest designed championship golf course, an exceptional practice facility with a learning academy, state-of-the-art GPS-equipped golf carts, and a 76,000 square foot clubhouse with men's and women's locker rooms, lounges, two full-service restaurants, and full banquet facilities. Memberships are available.

Bolingbrook Golf Club was named #28 in the 2010 *Golf World* Readers' Choice Awards for best public course in the country, named to the 2009 *Golfweek* Best Courses You Can Play list, and received 4½ stars from *Golf Digest*



Bowes Creek Country Club

847-214-5880
1250 Bowes Creek Boulevard
Elgin, Illinois 60124
bowescreekcountryclub.com

Here at Bowes Creek Country Club, our patrons are not treated like an everyday customer. You can buy a membership for the year or you can pay to be a Member for a Day! Instead of standard green fees, we offer a daily membership. The Member for a Day Fee will allow you to play unlimited golf with cart and allow you full use of the practice facility. There will be no limit to the amount of golf you want to play that day because you are... Member for that Day!



Cantigny Golf

630-668-8463
27w270 Mack Road
Wheaton, IL 60189
cantignygolf.com

Designed by Roger Packard, scenic Cantigny hosted the U.S. Amateur Public Links Championship in 2007 and is home to the 2013 Chicago Open, Oct. 7-9. The Illinois State Amateur returns to Cantigny in 2014. The Cantigny Golf Academy is a prime practice and learning center, and junior golfers thrive at the 9-hole Cantigny Youth Links.

Cantigny's 27 holes are ideal for outings ranging from 16 to 220 golfers. The course employs a full-time golf event coordinator to ensure a good experience for planners and guests.



golfTEC

10 Chicagoland Locations
golftec.com

Chicago - Halsted Row
773-755-4653

Chicago - Lincoln Park
773-871-4653

Deerfield 60015
224-330-4020

Des Plaines 60016
847-299-5431

Downers Grove 60515
630-932-4653

Fox Valley 60505
630-723-5215

Naperville 60563
630-579-9390

Oakbrook Terrace 60181
630-396-2020

Schaumburg 60173
847-517-1845

Vernon Hills 60061
847-327-0605



Golfsmith

5 Chicagoland Locations
golfsmith.com

Fox Valley 60504
630-585-0872

Highland Park 60035
847-579-0219

Lincoln Park 60614
773-281-1494

Downers Grove 60515
630-495-4880

Schaumburg 60173
847-969-0347

Buy it. Try it. Keep it. Or return it and get another.

If for any reason you are not satisfied within the first 30 days after your club purchase, return your clubs to Golfsmith and receive a credit of up to 90% of the original purchase price toward your next club purchase.



The Highlands of Elgin

847-931-5950
875 Sports Way
Elgin, IL 60123
highlandsofelgin.com

The new quarry nine and the original nine holes flow over beautiful rolling terrain, creating a diverse collection of holes. The new nine holes reclaim an old stone quarry, and are routed to take maximum advantage of the unique and dramatic landforms that were left behind. Four holes hug the top of the bluff thirty to forty feet above the water, providing golfers with incredible views and numerous shot options on each hole.



Harborside International G.C.

312-782-7837
11001 S. Doty Ave. East,
Chicago, IL 60628
harborsideinternational.com

Located just south of the loop in the City of Chicago, Harborside features two championship-style links courses designed by renowned architect Dick Nugent.

Harborside is home to Chicago's largest practice facility, a prairie-style clubhouse, and Pier 37 Restaurant operated by Chicago's top restaurateur, Phil Stefani.

Harborside's Port and Starboard courses rank annually among the Midwest's list of best courses you can play.



Chicago Park District Golf

312.245.0909
cpdgolf.com

Great Golf in the Heart of the City.

With six courses, three driving ranges and two miniature golf courses there's golf enjoyment for the whole family. PLUS... save EVERY DAY, secure early tee time access and more with the CPD Players Advantage Card!

- Robert A. Black – 9 Holes
- Sydney R. Marovitz – 9 Holes
- Jackson Park – 18 Holes
- Columbus Park – 9 Holes
- Marquette Park
- South Shore
- Diversey Range



Forest Preserve Golf Courses | Cook County

800.460.0010
forestpreservegolf.com

Affordable GOLF. Friendly SERVICE. Fantastic EXPERIENCE.

Forest Preserve Golf offers something for every golfer. PLUS...save EVERY DAY with the FPG Golf and Rewards Card!

- Billy Caldwell: 9 Holes
- Burnham Woods: 18 Holes
- Chick Evans: 18 Holes
- Edgebrook: 18 Holes
- George Dunne National: 18 Holes
- Harry Semrow: Driving Range & Mini Golf
- Highland Woods: 18 Holes
- Indian Boundary: 18 Holes
- Joe Louis: 18 Holes
- Meadowlark: 9 Holes
- River Oaks: 18 Holes



The Glen Club

847-724-7272
2901 West Lake Ave.
Glenview, IL 60026
theglenclub.com

The Glen Club is a stunning Tom Fazio designed championship course located at the former Glenview Naval Air Station. In the heart of a 195-acre refuge, The Glen Club features rolling terrain, dramatic elevation changes, tranquil lakes, and striking vistas.

Enjoy the grand 48,000 sq. ft. clubhouse, superb dining, 21 overnight guest rooms, a grand ballroom, and the finest in corporate amenities and Membership.



Glencoe Golf Club & Golf Academy

847-835 -0250
621 Westley Road
Glencoe, IL 60022
glencoe golfclub.com

The Glencoe Golf Club, known for excellent course conditions and lightning fast greens, is a great escape from the sights and sounds of the city, located only 20 minutes north of Chicago, just off the Edens Expressway.

- Grass tee practice range
- Short game practice area
- Jr./Sr. Discounts
- Golf Academy featuring premiere junior programs, clinics, and private lessons.



Lake Bluff Golf Club

847-234-6771
355 W Washington Ave
Lake Bluff, IL 60044
lakebluffgolfclub.com

Located on the scenic North Shore of Chicago, Lake Bluff Golf Club offers a beautiful and challenging layout in a traditional parkland setting. Lake Bluff Golf Club takes great pride in the immaculately conditioned bent grass fairways and greens. The club anxiously awaits hosting the 42nd Annual Lake County Amateur this July 27 and 28.



Mistwood Golf Club

815-254-3333
1700 W. Renwick Rd.
Romeoville, IL 60446
mistwoodgolf.net

Mistwood Golf Club, with its recent multi-million dollar renovations and new state of the art golf-learning center, has become one of the premier golf experiences in the Chicagoland area. Mistwood, host of the Illinois Women's Open, features new Scottish style stacked sod-wall bunkers, which are not something seen in traditional American golf. Other amenities include a full-service pro shop, golf instruction, and wonderful dining.



Orchard Valley Golf Course

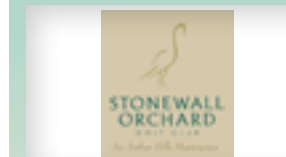
2411 West Illinois Avenue
Aurora, IL 60506
630-907-0500
orchardvalleygolf.com

6th Best Public Course in Illinois by *GOLF Magazine*.

One of Chicagoland's best public courses, *Golf Digest* ranks Orchard Valley 4½ Stars! A true championship layout featuring wetlands, lakes, roughs, water hazards, waterfalls and more.

PLUS... a program for everyone!

- SAVE on every round with the OV Rewards PLUS program
- UNLIMITED twilight golf and range with the PPP card
- Annual Memberships and MORE!



Stonewall Orchard

25675 W Highway 60
Grayslake, IL 60030
847-740-4890
stonewallorchard.com

Cutting through hundred-year old oak and pine trees, Stonewall Orchard Golf Club has quickly become one of Chicago's most prolific public golf courses.

Since opening in 1999, The Arthur Hills-designed gem located in northwest suburban Grayslake has served as Final Stage Qualifying site for the U.S. Open and currently sits on rotation with Olympia Fields and Medinah Country Club as host site for the Illinois PGA Section Championship held every September.

To learn more, visit stonewallorchard.com or call 847-740-4890.





Water's Edge Golf Course

7205 West 115th Street
Worth, IL 60482
708-671-1032

watersedgegolf.com

Best Places To Play By
Golf Digest.

Water's Edge is Chicago's south side destination course. This championship 18-hole golf course offers bent grass greens and fairways, and a complete day/night practice and range facility, along with The Edge Bar & Grill for great meals and daily specials.

PLUS...a program for everyone!

- SAVE on every round with the Edge PLUS Pass
- UNLIMITED twilight golf and range with the Edge Practice Club



Whisper Creek Golf Course

12840 Del Webb Boulevard
Huntley, IL 60142
847-515-7680

whispercreekgolf.com

Luxury Golf at a Whisper of a Price!

Whisper Creek Golf Club is a fair test for a gamut of golfers. From beginners to scratch golfers, anyone who appreciates a day on the course will come away feeling rewarded by a round at Whisper Creek.

PLUS...a program for everyone!

- SAVE on every round with the Whisper Rewards PLUS program
- UNLIMITED twilight golf and range with the PDP card
- Annual Memberships and MORE!



White Mountain Golf Park

9901 179th Street
Tinley Park, IL 60477
708-478-4653

whitemountaingolfpark.com

Learn. Practice. Play.

- Executive course offering 9 holes of competitive golf
- Practice Range with artificial and grass hitting stations, and heated, covered stalls
- Mini Golf park offering 18 holes
- Professional instruction for all levels and abilities
- Fully stocked golf shop
- Party room perfect for events, fundraisers and more!

PLUS...earn FREE stuff with the Playback Rewards program – join TODAY!



White Pines Golf Club & Banquets

630-766-0304 500 W Jefferson Ave
Bensenville, IL 60106

whitepinesgolf.com

36-hole championship course situated on over 240 acres, has been a favorite among Chicago area golfers since 1928. Ten minutes from O'Hare International Airport, White Pines in Bensenville is a perfect choice for anyone looking for a challenging game of golf any time of the year.

White Pines Golf Club offers a superb setting, sure to make you feel like you are "away from it all."

Blackberry Oaks

630-553-7170
Bristol

Bonnie Brook GC

847-360-4735
2800 N. Lewis Ave.
Waukegan, IL 60087
waukegangolf.org

Boughton Ridge

630-739-4100
Bolingbrook

Coyote Run Golf Course

708-957-8700
800 Kedzie
Flossmoor IL 60422
coyoterungolf.com

Par 71
Yardage: 6,478
Weekday: \$50 w/cart
Weekend: \$60 w/cart
Jr./Sr. Rates: Yes, \$31 w/cart, Mon.-Thu. only
Twilight Rates: Yes
Banquets/Outings: Yes

Eaglewood Resort and Spa

630-773-3510
1401 Nordic Rd.
Itasca, IL 60143
eaglewoodresort.com

Par 72
Yardage 6,015 - 5,410 yds.
Weekday: \$39.00 w/cart (Spring Rate)
Weekend: \$45.00 w/cart (Spring Rate)
Jr./Sr. Rates: Yes
Twilight Rates: Yes
Banquets/Outings: Yes

The First Tee of Aurora & Fox Valley

630-499-0680
1001 Hill Avenue
Aurora, IL 60505
thefirstteeaurora.org

The First Tee of Greater Chicago

773-885-8258
2901 W. Lake Avenue,
Suite A
Glenview, IL 60025
thefirstteegreaterchicago.org

Flagg Creek Golf Course

708-246-3336
6939 S. Wolf Road
Countryside, IL 60525
flaggcreekgolfcourse.org

Par 33
Yardage: 2493 – 1865
Weekday: \$14 (resident)
\$18 (non res.)
Weekend: \$16 (resident)
\$20 (non res.)
Cart Fee: \$16
Jr./Sr. Rates: Yes
Twilight Rates: Yes
Banquets/Outings: Yes

Fox Bend Golf Course

630-554-3939
3516 Route 34
Oswego, IL 60543
foxbendgolfcourse.com

Par 72
Yardage: 6,890 – 5,325
Weekday: \$38 walk
\$54 ride
Weekend: \$43 walk
\$59 ride
Jr./Sr. Rates: Yes
Twilight Rates: Yes
Banquets/Outings: Yes
Resident rates available

Grand Geneva Resort and Spa

262-248-8811
Lake Geneva, WI 53147

Green Meadows Golf Club

630-810-5330
18 W 201 West 63rd Street
Westmont, IL 60559
DuPageGolf.com

Par 30
Yardage: 1,888 - 1,545 yds.
Weekday: \$14 walk
\$22 ride
Weekend: \$16 walk
\$24 ride
*Frequent specials on course website
Discount Program: Yes
Jr./Sr. Rates: Yes
Twilight Rates: No
Banquets/Outings: No

Hamilton County Golf

Indiana's Premier Golf Destination!
indianaspremiergolf.com

Indian Oaks Country Club

815-824-2282
Shabbona, IL
9 Holes
3,379 yards
indianoaksccl.com

Kids Golf Foundation of Illinois

Golf Changes Kids' Lives
630-466-0913
P.O. Box 610
Sugar Grove, IL 60554
kidsgolffoundation.org

Links & Tees Golf Facility

630-458-2660
Addison, IL
Recognized in 2011 by *Golf Range Magazine* as one of the top 100 learning facilities in North America.
addisonparks.org

All information in this directory is provided by participating courses. GOLFCicago is not responsible or liable for errors or incorrect information. Map © Copyright 2013 GOLFCicago Magazine. All rights reserved.

Maple Meadows Golf Club

630-616-8424
272 Addison Rd.
Wood Dale, IL 60191
DuPageGolf.com

West 18 - Par 70
Yardage: 6,438 - 5,339 yds.
Weekday: \$32 walk
\$49 ride
Weekend: \$41 walk
\$58 ride

*Frequent specials on course website

East 9 – Par 34
Yardage: 2,815 - 2,427 yds.
Rate: \$16 walk / \$25 ride
Discount Program: Yes
Jr./Sr. Rates: Yes
Twilight Rates: Yes
Banquets/Outings: Yes

Martin Design Partnership, Ltd.

Golf Course Architecture and Design
630-482-2532
335 N. River Street
Suite 201
Batavia, IL 60510
mdpltd.com

Naperbrook Golf Course

630-378-4215
22204 W. Hassert Boulevard
Plainfield, IL 60585
golfnaperville.org

Par 72
Yardage: 6677
Weekday: \$38
Weekend: \$48
Jr./Sr. Rates: Yes
Twilight Rates: Yes
Banquets/Outings: Yes

Oak Brook Golf Club

630-368-6400
2606 York Road
Oak Brook, IL 60523
oak-brook.org/recreation

Par 72
Yardage 6541 - 5341 yds
Weekday: \$67.50 w/cart
Weekend: \$71.50 w/cart
Jr./Sr. Rates: Yes
Twilight Rates: Yes
Banquets/Outings: Yes

Oak Meadows Golf Club

630-595-0071
900 N. Wood Dale Road
Addison, IL 60101
DuPageGolf.com

Par 71
Yardage: 6,718 - 5,628 yds.
Weekday: \$32 walk
\$49 ride
Weekend: \$41 walk
\$58 ride

*Frequent specials on course website
Discount Program: Yes
Jr./Sr. Rates: Yes
Twilight Rates: Yes
Banquets/Outings: No

SentryWorld

Closed for renovation for 2013 season
866-479-6753
Stevens Point, WI
18 holes
Par 72
6,951 yards
sentryworld.com

Shepherd's Crook

847-872-2080
351 N. Green Bay Rd.
Zion, IL 60099
shepherdcrook.org

Shiloh Park

847-746-5500
23rd and Bethesda Blvd.
Zion, IL 60099
shilohparkgolf.com

Springbrook Golf Course

630-848-5060
2220 W. 83rd Street
Naperville, IL 60564
golfnaperville.org

Par 72
Yardage: 6,896
Weekday: \$40
Weekend: \$50
Jr./Sr. Rates: Yes
Twilight Rates: Yes
Banquets/Outings: Yes

Village Greens

630-985-3610
Woodridge

Western Golf Association / Evans Scholars Foundation

westerngolfassociation.com

White Pines Dome

630-776-0304, ext. 5
Bensenville, IL
whitepinesdome.com

Zigfield Troy Par 3

630-985-9860
1535 W. 75th Street
Woodridge, IL 60517

Course Managers:

For inclusion in this directory, or to update your listing, please call 815.741.8005 or email us at

dweretka@golfchicagomagazine.com

GET FIT LIKE A TOUR PRO

Only at The Driving Range & Golf Academy
at Bolingbrook Golf Club



SCHEDULE YOUR FITTING TODAY!

bolingbrookgolfclub.com/TCGTE
(630) 771.9400



TOUR EXPERIENCE



Re-Imagining the Swing

Kinetic Golf
By Nick Bradley
\$29.95 (hardcover)
195 pages
www.abramsbooks.com
ISBN:13-978-0-8109-8360-1

Our literary department, more often than not, does not place too many golf instruction books on the shelf. However, the recently published *Kinetic Golf* earns its place in *GOLFChicago's* esteemed bookcase with a bound edition that may not replace *Ben Hogan's Power Golf* and *Five Lessons*, but will compel you to rethink your current swing thoughts and swing keys.

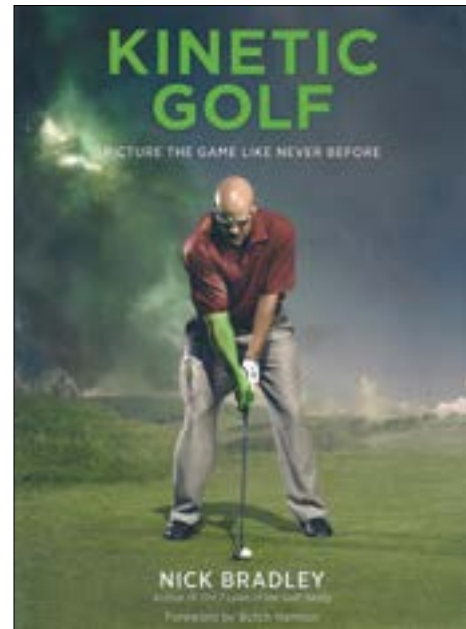
Bradley's first book, *The 7 Laws of the Golf Swing*, is considered groundbreaking; however, the visual literacy packed into *Kinetic Golf* is as far out of the tee box as most of us can imagine.

That is until you crack the book's spine and see how back loading your spine by visualizing an anvil on your head will create more power.

Kinetic Golf creates revolutionary imagery for golfers. Those images include the grim reaper shadowing a "gimmie" putt; hitting a fairway bunker shot from a giant dinosaur egg; and even swinging a chainsaw from the thick rough. Our techno-crazed sport is ready for photography where Anthony Ravielli (illustrator of *Five Lessons*) meets Salvador Dali. While these images may appear to be off the storyboard of a science fiction graphic novel, the text and visuals are easily applied to any homemade swing. Bradley's instructional philosophy is the perfect companion to these not-of-this-dimension images. He connects with neophytes and club champions alike. If you feel that golf has lost its edge, crack open *Kinetic Golf* and enter *The Matrix*.

ON THE SHELF

Between the Covers



Between the Mountains and the Deep Blue Sea

If you're looking for good value in wine, head for the Chilean section of your local wine shop. Winemaking was established in Chile in the mid-sixteenth century by Spanish missionaries, and for 300 years wine production was based on the Pais grape they carried. In 1851, French wine experts arrived, and with them the more familiar European grape varieties. And now, even with over 400 years of experience, and free of the twin scourges of Prohibition and phylloxera, Chile has yet to attain its full potential.

This promise continues to attract winemakers from around the world. One of the French concerns is the Marnier Lapostolle family, founders and owners of the famous orange liqueur Grand Marnier, as well as other spirits. Lapostolle was established in 1994, with the goal of creating top-quality wines using French expertise and the unique terroirs of Chile.

2009 Cuvee Alexandre Chardonnay \$20
The home of this wine is the Atalayas vineyard in the Casablanca Valley, in the Coastal Cordillera, 47 miles west of Santiago. Atalayas was originally planted in 1997, and enjoys cool coastal winds and a low annual rainfall. 100% of Atalayas vineyard is under organic and biodynamic agriculture management.

This is the rare white that will benefit from thirty minutes or so of 'breathing' before pouring. While you're waiting, admire its bright lemon-yellow color and nose of citrus and melon. This wine suggests grapefruit on the palate, which is supported by its zippy acidity. There is oak, but it is well integrated and in a secondary role. Look for a hint of crème brûlée on the finish. Fermentation was on 68% new and used French oak, as well as 32% stainless steel. 20% of the total underwent a further malolactic fermentation.

This wine would go nicely with Braised Snapper and Mussels, Shrimp in a Picante Sauce, or Chicken à la Chinita. ●●●●

2011 Canto de Apalta \$20
The horseshoe-shaped Apalta vineyard is located 124 miles southwest of Santiago, 42 miles away from the Pacific Ocean, between the Andes mountain range and the Coastal Cordillera. The first vines in Apalta were planted in 1920, and some of these were transplants that had originally been brought from France at the

end of the 19th century. Apalta is also 100% under organic and biodynamic management.

"Song of Apalta" is a Bordeaux-style red blend that was born from the relationship between Carmenère, Merlot, Cabernet Sauvignon, and Syrah. All fermentations were made with wild yeasts and minimal intervention on the part of the winemaking team.

Here's a food-friendly wine that is also good for quaffing. It is rich garnet in the glass, with delicate legs. The nose shows spice and eucalyptus, as well as black and red fruits. The body is light in the mouth, with flavors of ripe red berries and figs. These are backed up by medium tannins and a surprising amount of acidity. The wine has a medium-length finish.

Serve with Roast Beef in a Black Pepper Crust, Leg of Lamb with Pistachios, or Lemon Veal Chops. ●●●●

ON THE CORKSCREWS

Leo McNeal



leo849@mchsi.com

CENTRAL MISSOURI'S
LAKE OF THE OZARKS
GOLF TRAIL

With breathtaking views...all the golf you could dream of on 14 beautiful and challenging courses...and comfortable and convenient accommodations set against the background of our shimmering Lake and rolling Ozark hills... don't you think it's time **YOU** hit the **TRAIL**?

just play it!

TO BOOK YOUR GOLF TRAIL GETAWAY
VISIT GOLFATLAKEOFTHEOZARKS.COM
FIND US ON FACEBOOK.

MISSOURI
VisitMO.com

LA | FITNESS
WWW.LAFITNESS.COM

With nearly 600 clubs nationwide, there's an LA Fitness near you.

Check us out online and become a member today!

Photos depict a typical facility; locations may vary. Certain amenities such as Kids' Klub and personal training are available for a fee. Rates online may be subject to change without notice. ©2013 Fitness International, LLC. All rights reserved.



Three Tours Primed for Chicagoland

A little less than two years ago in the fall of 2011, as Justin Rose was winning the BMW Championship at Cog Hill, there were grey clouds hanging over the tournament. Handwringing over the state of professional golf in the Chicago area had begun, anxiousness created in large part because it seemed like the nation's third largest media market was losing some luster in the eyes of the PGA Tour, the United States Golf Association, and the PGA of America.

Wisconsin and Erin Hills would beat out Cog Hill for the U.S. Open. There was no PGA Championship on the horizon. Yes, the Ryder Cup would come in 2012, but there would be no PGA Tour event. Yes, the BMW Championship would come back in 2013, but that was the point—it was now being rotated in and out of the Chicago area.

My, things have changed. And quickly.

Let's start with the tournaments. The BMW Championship was set to return in 2013, but there is a new buzz surrounding the limited field event in that Luke Donald helped move it to his home club at Conway Farms in Lake Forest. Then, the Champions Tour announced its return after a decade away, with Northbrook-based Encompass Insurance bringing a pro-am tournament to North Shore Country Club in late June.

The LPGA Tour then officially announced it would bring an international competition back to Jerry Rich's Rich Harvest Farms in Sugar Grove with the International Crown in 2016.

What's perhaps most interesting about this stretch of tournaments is that they are all at venues not normally seen by the public or those that have traditionally hosted professional events, though Rich Harvest Farms was the site of the 2009 Solheim Cup.

President of Encompass Insurance Tom Ealy spoke on why North Shore Country Club was chosen for the Encompass, despite not having hosted a professional event since the 1933 U.S. Open.

"We wanted the course to be really tradition-rich and one where the Champions Tour guys would enjoy it," Ealy said. "It's a classic, sort of a tight layout, there's not a lot of distance between holes, so not only is it a stern test but the Champions Tour guys know the history of North Shore. From a layout perspective, it's really tailor-made for the Champions Tour. And, we also wanted it to be one where the community would say 'Wow, that is just a spectacular choice.'"

As for selecting Rich Harvest for the LPGA event, commissioner Mike Whan said: "When I think of

FROM THE FRINGE

Insights on the PGA Tour



Jim Owczarski

Jerry Rich I think of the living golf example of 'If you build it, they will come'—he has built something that is truly spectacular in the suburbs of Chicago. When you pull into the gates there you know you've come to someplace special."

When Rose holed out his winning putt back in 2011, it seemed as if the cloud over golf in this city and state would hang around for a while. But now the sun is shining through. There is professional golf in 2014 with the Encompass Championship. That event will be back in 2015 along with the probable return of the BMW Championship (don't forget the U.S. Amateur at Olympia Fields, either). Then, in 2016 the International Crown will be held. Between now and then, who knows what other major tournament announcements will come this area's way.

The Chicago White Sox and the Blackhawks have won championships, and the Bears played for one in the last decade; even so, sometimes a 'Second City' mentality settles over the local sports scene. Golf was not immune, at least for a very brief stretch. But now, it feels like we're regaining some of the old swagger as a golf Mecca once again.

The players representing this state seem to be hitting their stride also, and there is a crop of young players on the PGA Tour that are making a name for themselves.

- Kevin Streelman won his first PGA Tour event at the Tampa Bay Championship and backed that up about a month later with a tie for third at the RBC Heritage on April 21. That play has propelled him to fourth in the FedEx Cup standings, behind Tiger Woods, Brandt Snedeker, and Matt Kuchar and just in front of Masters champion Adam Scott.

In his Q&A with *GOLFChicago* last month, Streelman talked about changing his thinking about results and he elaborated a bit more on that at the RBC Heritage.

"That has, I think, freed me up to win Tampa and to be comfortable being in the top 10 on the FedEx list, and be comfortable in a position like this," he said. "If I play well on the weekend, great, if I don't play well, great. I know I'm doing the right things from my practice and workout and for a lifestyle situation for the long term with my career. So I'd say that frees me up to either win or lose, I'm okay with either one."

- In-between Streelman's great play was University of Illinois alumnus D.A. Points winning his second PGA Tour title at the Shell Houston Open, a victory that moved him into the top 25 of the FedEx standings.

The Champions
Tour guys know the
history of North
Shore. From a layout
perspective, it's
really tailor-made
for the Champions
Tour. And, we
also wanted it to
be one where the
community would
say "Wow, that is
just a spectacular
choice."

THE NUMBERS DON'T LIE.

Others claim it. We prove it.

Fastest Ball Speed #1

Lowest Spin Rate #1

Longest Carry Distance #1



GOLF DIGEST
2013 HOT LIST SILVER
FAIRWAY WOOD



The Numbers Don't Lie.

XCG6 fairway woods and irons are longer than the competition. The new XCG6 fairway woods feature a unique 15-3-3-3 beta ti cup face, a high-density steel body and a tungsten sole plate that are combo-brazed for the ultimate in power and forgiveness. In fact, the XCG6 has the fastest ball speed, the lowest spin rate, and the longest carry of any fairway wood on the market. Guaranteed!

XCG6 irons feature four tungsten sole weights, an undercut cavity, and a super-thin face for the longest iron shots in golf. Guaranteed!

EXOTICS

by Tour Edge
1301 Pierson Drive, Batavia, IL 60510
800.515.3343 | touredge.com

Fairway Wood	Swing Speed (mph)	Ball Speed (mph)	Spin Rate (rpm)	Carry Distance (yds)
Exotics XCG6 #3-15.0	107.6	157.4	3528	251.8
Callaway X Hot #3-15.0	107.6	154.9	3873	245.1
TaylorMade RBZ Stage 2 #3-15.0	107.1	155.7	4039	244.8
Cobra AMP CELL #3-15.0	107.9	156.7	4545	240.6
Ping Anser #3-14.5	107.2	151.1	3981	238.3
Adams Speedline Super LS #3-15.0	107.2	153.3	4377	237.1
Titleist 913F #3-15.0	107.2	155.2	4822	234.6
Nike VR S Covert #3-15.0	107.4	150.1	5252	222.5

Iron	Club Speed (mph)	Ball Speed (mph)	Spin Rate (rpm)	Carry Distance (yds)	Total Distance (yds)
Exotics XCG6 #6 iron	90.4	119.0	6471	162.9	166.7
TaylorMade Rocketbladez #6 iron	90.5	115.2	7409	153.1	155.0

Trackman robot test results provided by igolf technologies using Titleist ProV1X balls. Fairway wood shot analysis data represents average of all hits at 107 mph club speed. All clubs were tested using stock stiff-flex shafts and Titleist ProV1x golf balls. Iron shot analysis data represents overall average of all hits at 90 mph average club speed. Irons were tested using stock steel stiff-flex shafts.

COME FOR THE GOLF.
STAY FOR THE EVENING.

2017 U.S. Open Championship®

Walking only.

Greens Stimping over 11.

Cottages. Rooms. Suites.

Chops. Steaks. Rotisserie Chicken. Mac & Cheese.

ERIN  HILLS

Golf Digest Top 10 Public Courses in the United States.

866-772-4769 • ERIN, WISCONSIN • WWW.ERINHILLS.COM